

**BF001**

Alibat fixed to framing  
@ 600 centers max

**NC204**

2x10g SS csk screws @ 600  
centers with min 30mm embedment

**NC204**

10gx16mm T410 SS csk screw @  
600 centers

**NC203E**

Fixing bracket @ 600mm centers

Wall underlay

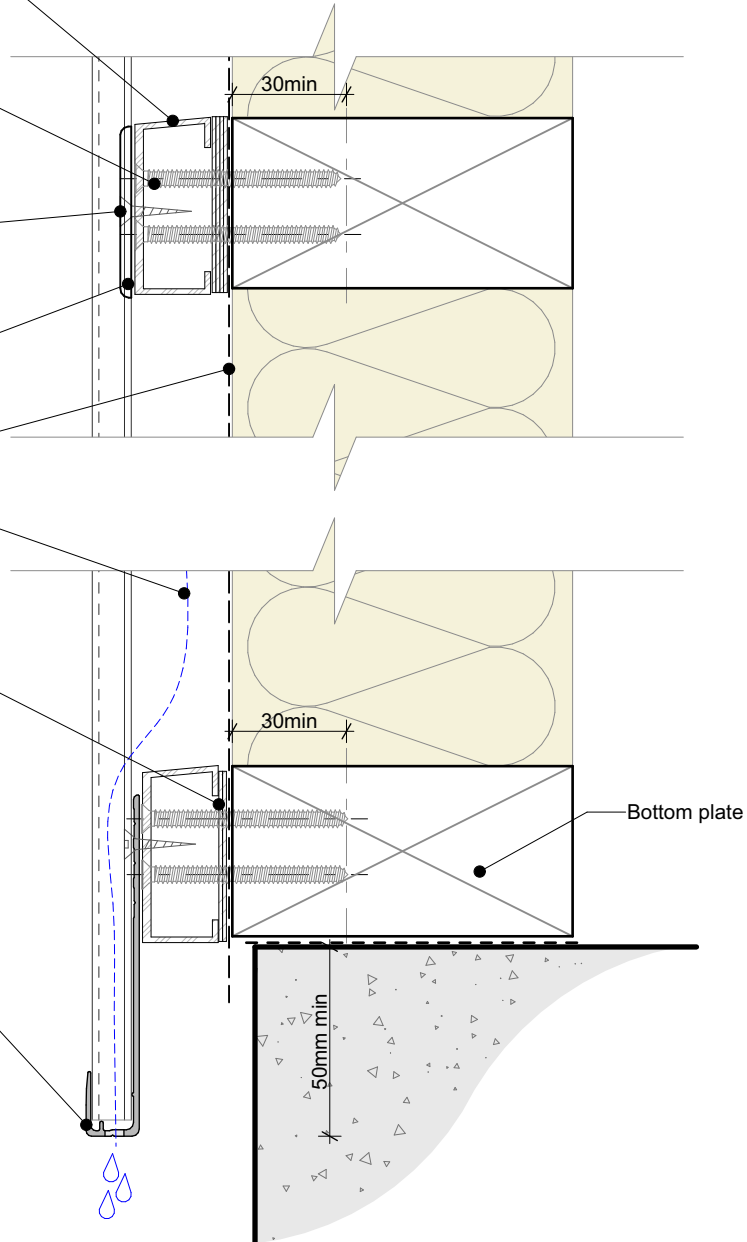
Air and moisture path

**BF SPACER**

1mm shims used, if required to  
level/plumb wall

**NC134P**

Pre-slotted base channel.  
Providing 2000mm<sup>2</sup> of ventilation  
per linear meter



**nu-wall**  
CLADDING

## Nu-Wall cladding vertical on cavity

### Typical installation - Alibat to timber frame

© 2021 copyright in this document is the property of Nu-Wall Aluminium Cladding Limited. All rights reserved. Nu-Wall is a registered trademark of Aluminium Product Brands NZ Limited

NW-VOC-004.01

Drawn by: Nu-Wall

Date: 14/03/2022

Checked by: RL, GT

Scale: 1:2 @ A4