

NC226
Impervious barrier (MDPE or similar)
between batten & cladding

NC203E
fixing clip @ 600 centers

NC204
10g ss csk screws with 30mm
min embedment

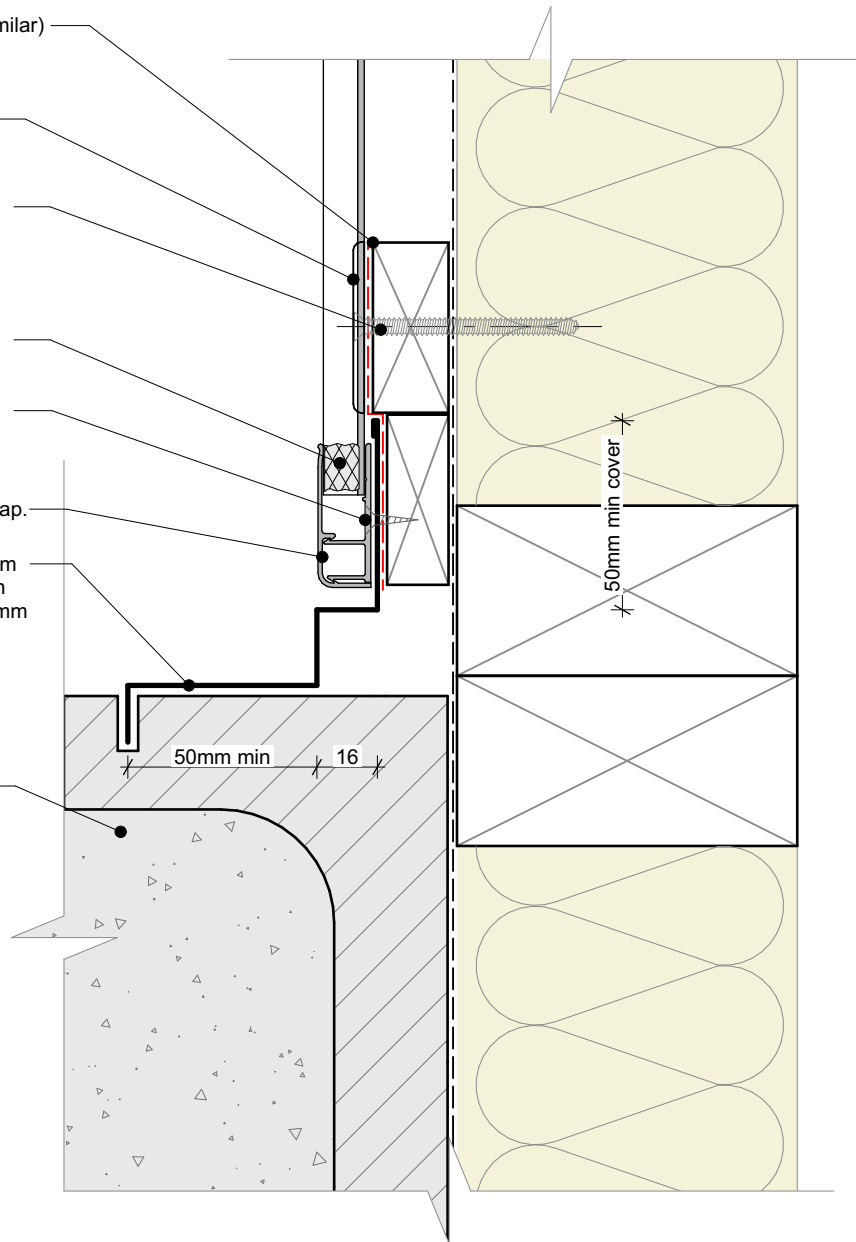
INSERT 154
15mm profiled closed-cell foam
insert end caps. Fixed in place
with silicone sealant.

NC 204
10g x 16mm csk Tek screw @
600 centers

NC138 + NC139
Termination flashing base and cap.

Custom folded 1.2mm aluminium
flashing powder coated to match
cladding and chased in to 15x6mm
saw cut and sealed with flexible
joint sealant
(By others)

Concrete masonry block wall



General note:

- Cladding fixings omitted for clarity
- When finishing a wall with a ripped board, the board must be direct fixed with a counter sunk screw @ 600mm centres

Cavity batten note:

- 20mm timber battens required for all Nu-Wall horizontal board installations
- Batten to have 15° slope for moisture egress
- Battens to all internal, external corners, jambs, and sills to be sized to 18mm to accommodate flashing build up
- 20 and 18mm single castellated battens are available directly from Nu Wall
- Proprietary Nu-Wall AliBat is available as an alternative when a structural non-combustible batten is required



Nu-Wall cladding horizontal on cavity
Typical Nu-Wall to concrete masonry internal corner

NW-HOC-038.01

Drawn by: Nu-Wall	Date: 3/04/2022
Checked by: RL, GT	Scale: 1:2 @ A4

© 2021 copyright in this document is the property of Nu-Wall Aluminium Cladding Limited. All rights reserved. Nu-Wall is a registered trademark of Aluminium Product Brands NZ Limited