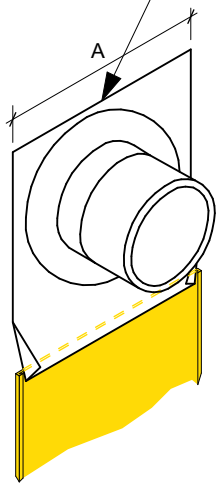


A = Pipe diameter + 100mm

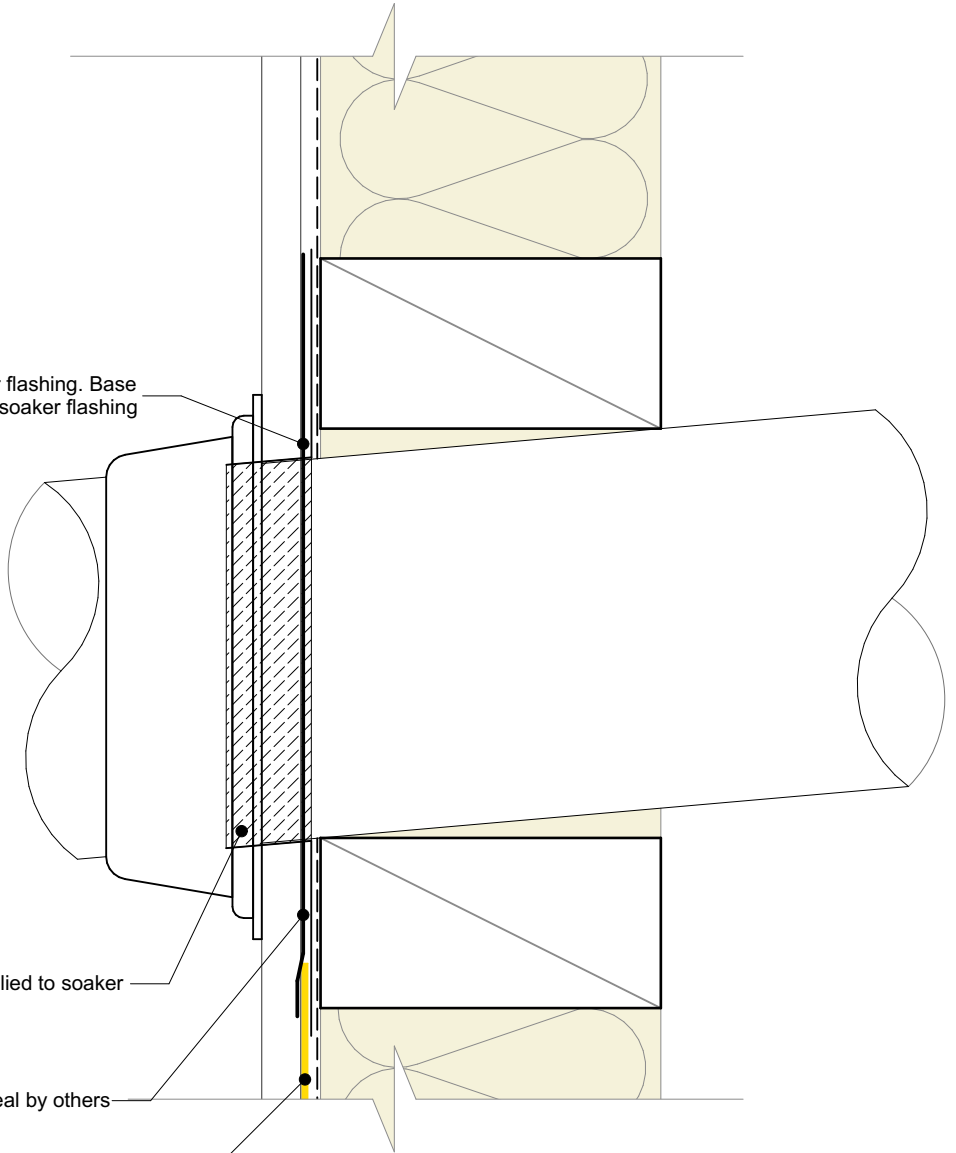


0.7mm Aluminium soaker flashing. Base tapered to fit in to plastic soaker flashing

Flexible flashing tape applied to soaker and pipe

Proprietary penetration seal by others

**NC227**  
Plastic soaker flashing. Base extends down in to base channel.



**General note:**  
• Cladding fixings omitted for clarity



Nu-Wall cladding vertical direct fix  
Typical pipe penetration

NW-VDF-017.01

Drawn by: Nu-Wall	Date: 9/05/2022
Checked by: RL, GT	Scale: 1:2 @ A4

© 2021 copyright in this document is the property of Nu-Wall Aluminium Cladding Limited. All rights reserved. Nu-Wall is a registered trademark of Aluminium Product Brands NZ Limited