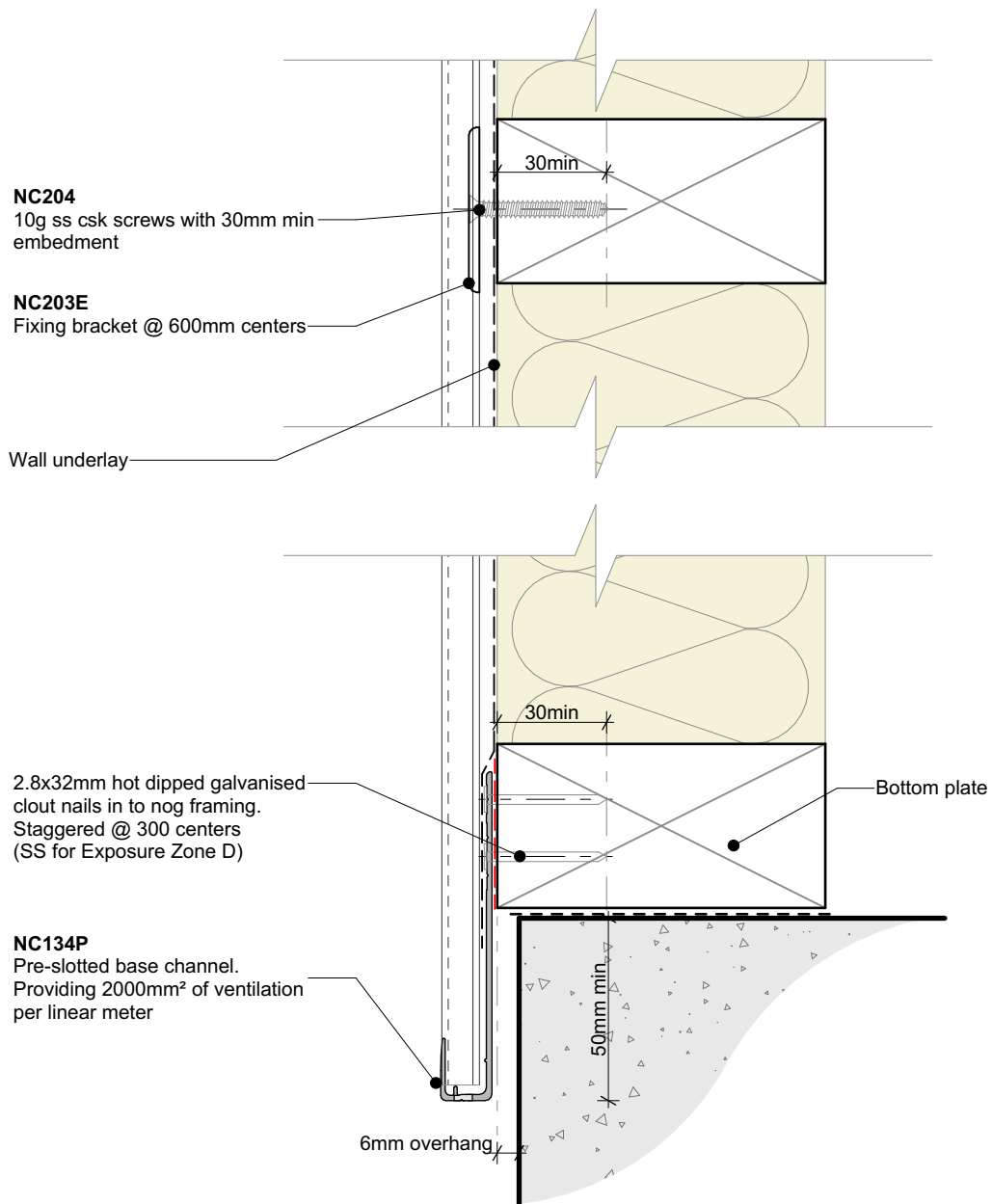




Nu-Wall Extruded Aluminium Cladding
Installation specifications - Vertical orientation direct fix

- 1 NW-VDF-001 Typical installation - Timber frame
- 2 NW-VDF-002 Typical base channel fixing
- 3 NW-VDF-003 Typical base channel over timber floor
- 4 NW-VDF-004 Typical base channel over waterproof deck
- 5 NW-VDF-004b Typical base channel over concrete slab
- 6 NW-VDF-005 Pre-Fabricated 90 deg base channel corner
- 7 NW-VDF-006 Typical corner NC107X and NC109X assembly
- 8 NW-VDF-007 Typical external 90 deg corner
- 9 NW-VDF-008 Internal 90 deg corner using NC107X and NC109X
- 10 NW-VDF-009 Typical inter storey or horizontal joint
- 11 NW-VDF-010 Typical sill section - NC247 and NC248 assembly
- 12 NW-VDF-011 Typical jamb section - NC247 and NC248 assembly
- 13 NW-VDF-012 Typical jamb section with negative detail filler
- 14 NW-VDF-013 Typical head section
- 15 NW-VDF-014 Soaker installation to window jamb
- 16 NW-VDF-015 Typical head flashing end detail
- 17 NW-VDF-016a Typical soffit trim
- 18 NW-VDF-016b Typical raking soffit
- 19 NW-VDF-016c Typical inverse raking soffit
- 20 NW-VDF-017 Typical pipe penetration
- 21 NW-VDF-018 Typical apron, roof to wall junction
- 22 NW-VDF-019 Typical parapet to wall
- 23 NW-VDF-020 Typical deck to wall junction
- 24 NW-VDF-021 Typical roof and gutter to wall junction
- 25 NW-VDF-022 Notching board around window jamb
- 26 NW-VDF-023 Ripped board to end of wall junction
- 27 NW-VDF-024 Typical Nu-Wall fascia to soffit
- 28 NW-VDF-025 Typical Nu-Wall to fascia - soffit - wall (with alternative)
- 29 NW-VDF-026 Typical garage door head - jamb (Timber reveal)
- 30 NW-VDF-026b Typical garage door head - jamb (Nu-Wall Reveal Profile)
- 31 NW-VDF-027 Typical Nu-Wall to brick internal corner
- 32 NW-VDF-028 Typical Nu-Wall to brick external corner NC138 and NC139
- 33 NW-VDF-029 Typical Nu-Wall to brick horizontal junction
- 34 NW-VDF-030 Typical Nu-Wall to brick vertical junction
- 35 NW-VDF-031 Typical Nu-Wall to concrete masonry vertical junction
- 36 NW-VDF-032 Typical Nu-Wall to concrete masonry external corner
- 37 NW-VDF-033 Typical Nu-Wall to concrete masonry internal corner



Note:
 • Standard fixing specification. May vary depending on wind load

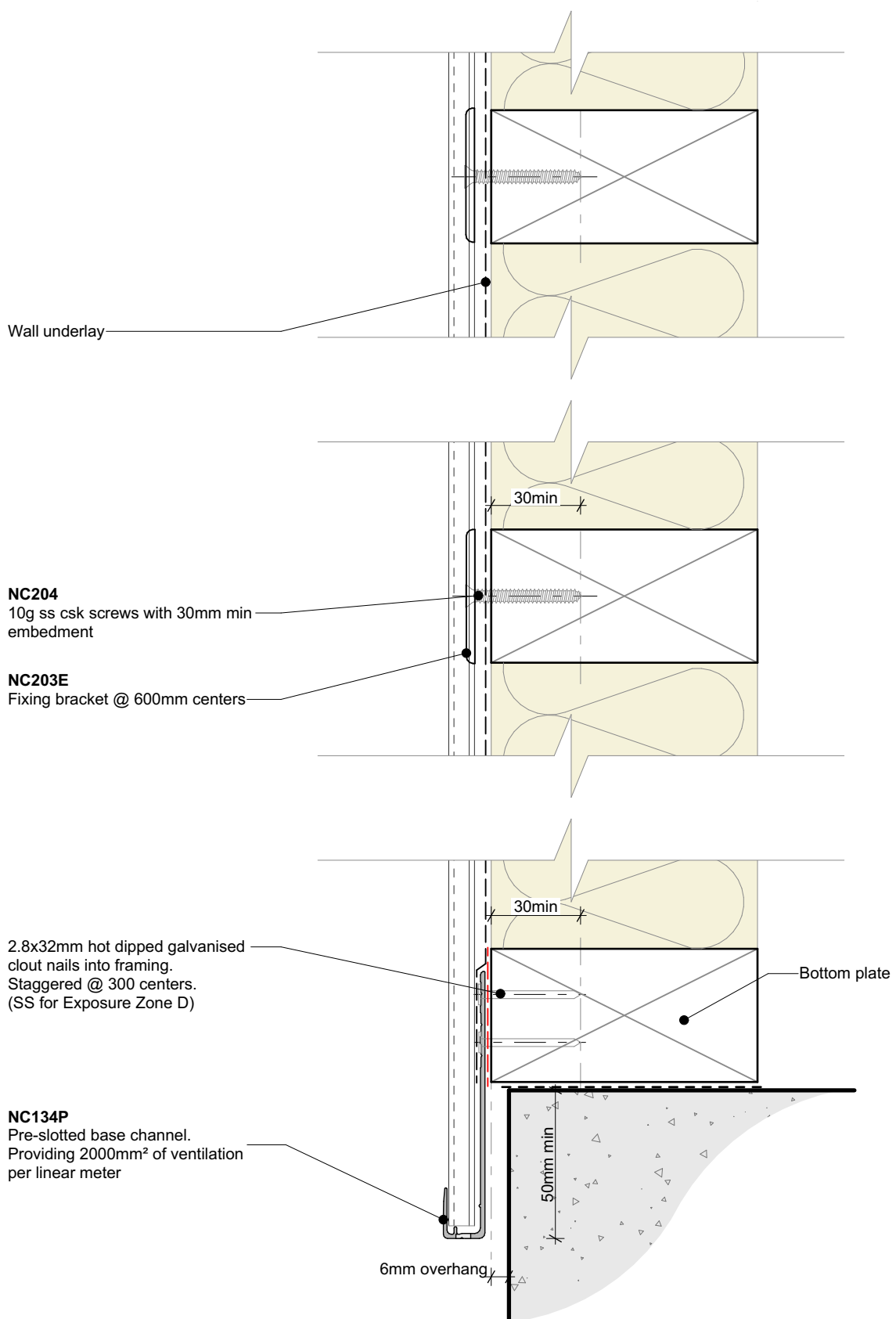


Nu-Wall cladding vertical direct fix
 Typical installation - Timber frame

NW-VDF-001.01

Drawn by: Nu-Wall	Date: 9/05/2022
Checked by: RL, GT	Scale: 1:2 @ A4

© 2021 copyright in this document is the property of Nu-Wall Aluminium Cladding Limited. All rights reserved. Nu-Wall is a registered trademark of Aluminium Product Brands NZ Limited



Note:
• Standard fixing specification. May vary depending on wind load

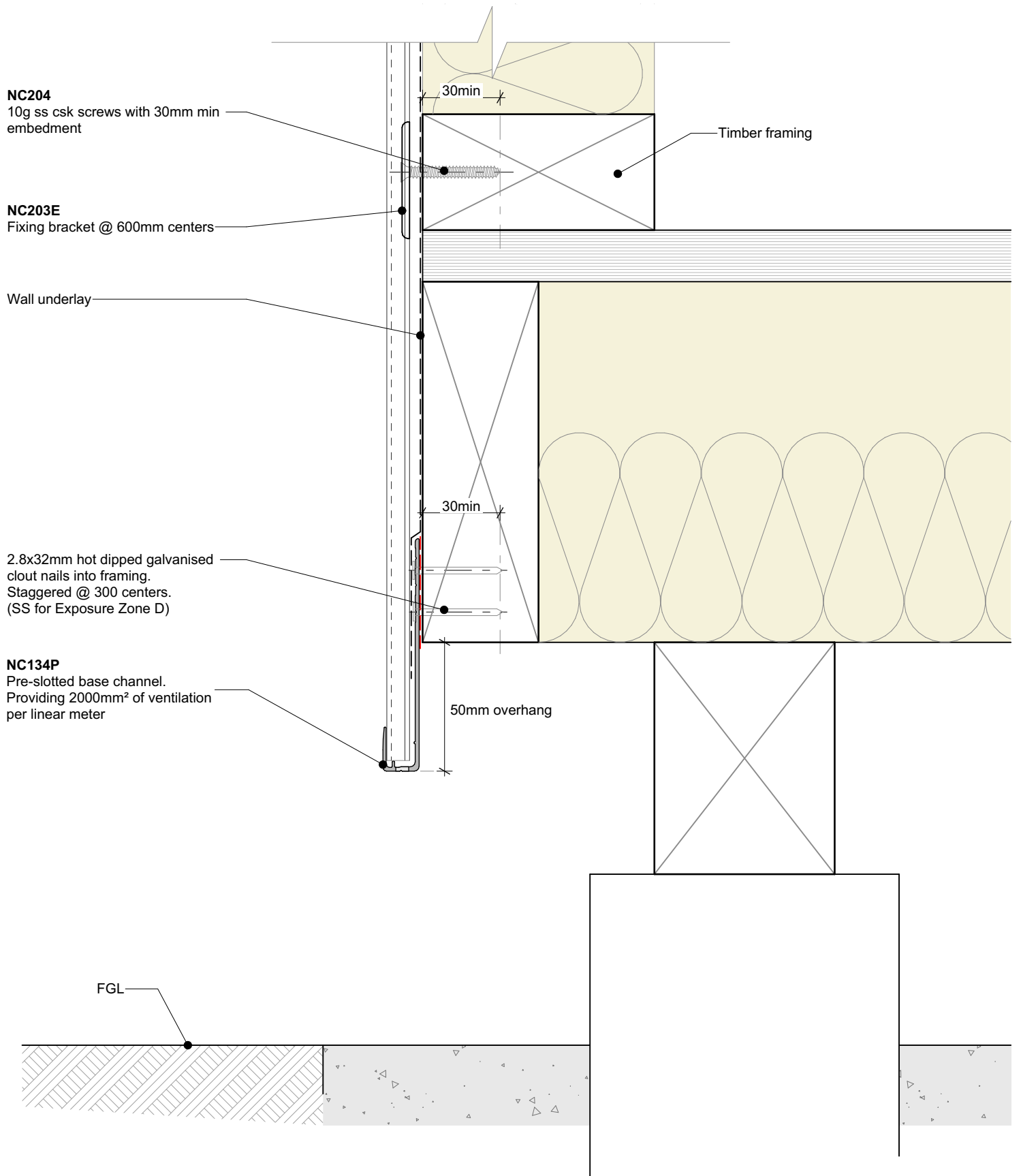


Nu-Wall cladding vertical direct fix
Typical base channel fixing

NW-VDF-002.01

Drawn by: Nu-Wall	Date: 9/05/2022
Checked by: RL, GT	Scale: 1:2 @ A4

© 2021 copyright in this document is the property of Nu-Wall Aluminium Cladding Limited. All rights reserved. Nu-Wall is a registered trademark of Aluminium Product Brands NZ Limited



Note:
 • Standard fixing specification. May vary depending on wind load



Nu-Wall cladding vertical direct fix
 Typical base channel over timber floor

NW-VDF-003.01

Drawn by: Nu-Wall	Date: 9/05/2022
Checked by: RL, GT	Scale: 1:2 @ A4

© 2021 copyright in this document is the property of Nu-Wall Aluminium Cladding Limited. All rights reserved. Nu-Wall is a registered trademark of Aluminium Product Brands NZ Limited

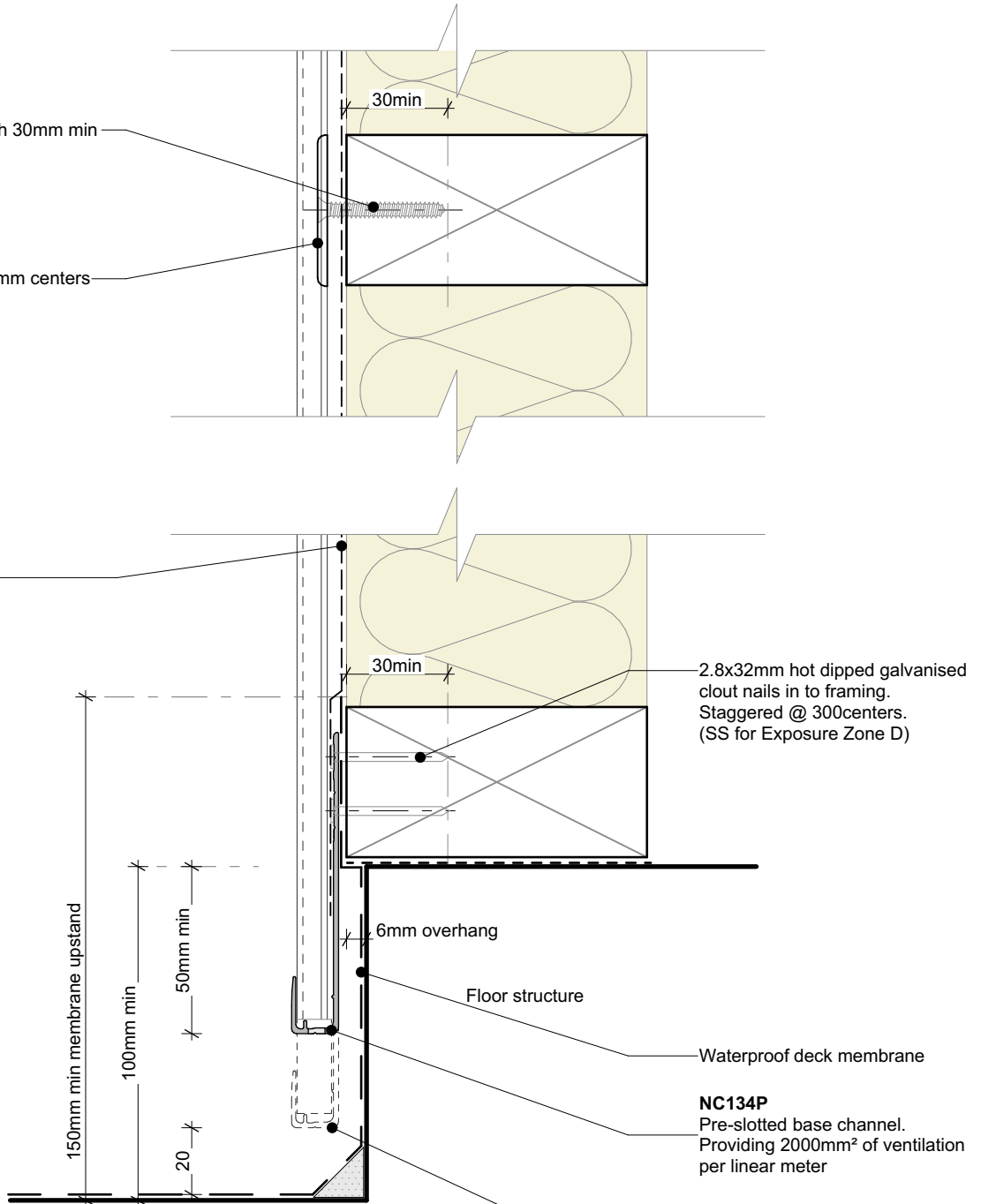
NC204

10g ss csk screws with 30mm min embedment

NC203E

Fixing bracket @ 600mm centers

Wall underlay



2.8x32mm hot dipped galvanised clout nails in to framing. Staggered @ 300centers. (SS for Exposure Zone D)

Waterproof deck membrane

NC134P
Pre-slotted base channel. Providing 2000mm² of ventilation per linear meter

NOTE
Nu-Wall supports the extension of the base channel down to 20mm of any hard surface. Timber cavity battens to comply with NZS 3604 requirements.

Note:

- Standard fixing specification. May vary depending on wind load



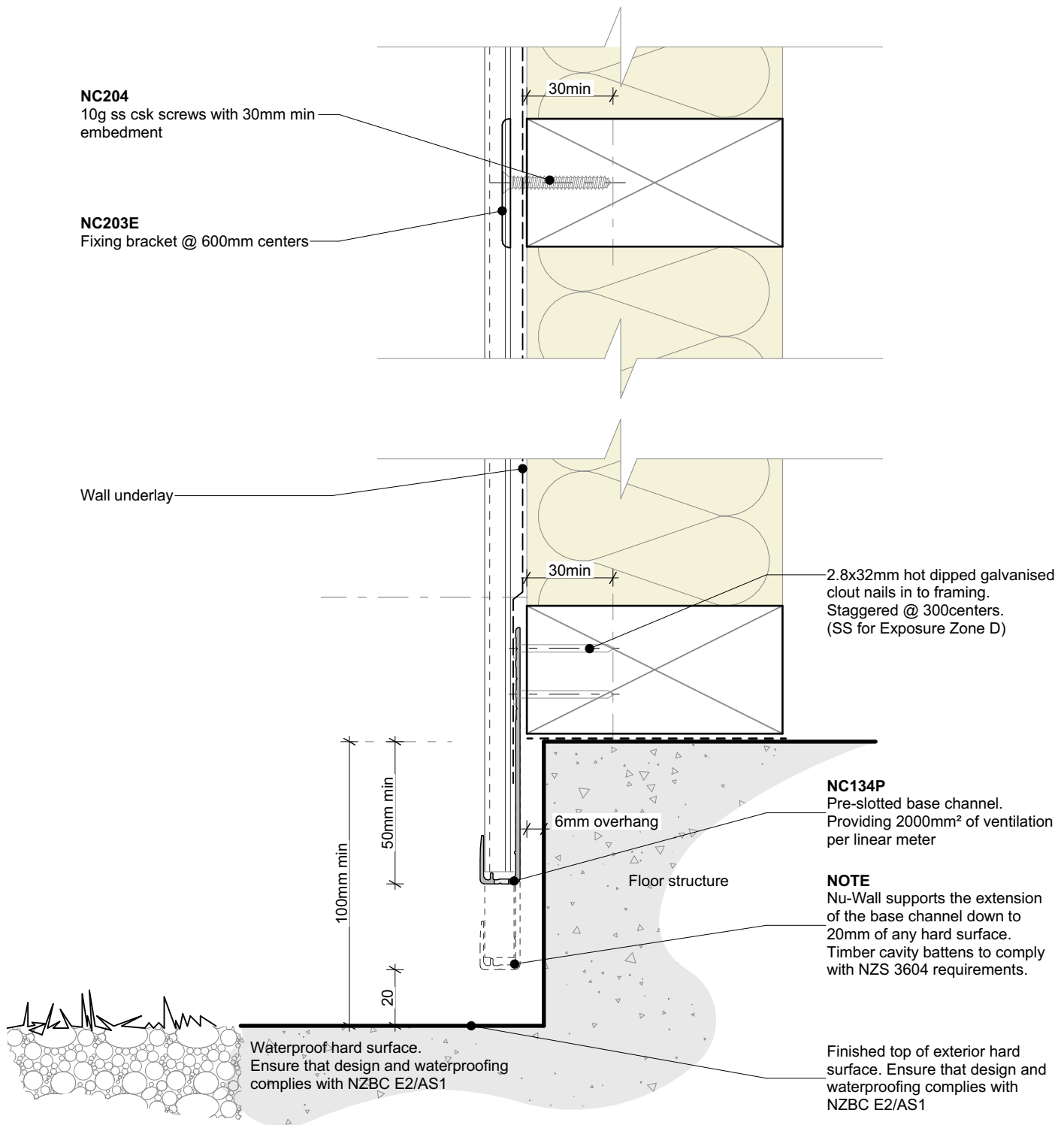
Nu-Wall cladding vertical direct fix
Typical base channel over waterproof deck

NW-VDF-004.01

Drawn by: Nu-Wall Date: 9/05/2022

Checked by: RL, GT Scale: 1:2 @ A4

© 2021 copyright in this document is the property of Nu-Wall Aluminium Cladding Limited. All rights reserved. Nu-Wall is a registered trademark of Aluminium Product Brands NZ Limited



Note:
• Standard fixing specification. May vary depending on wind load



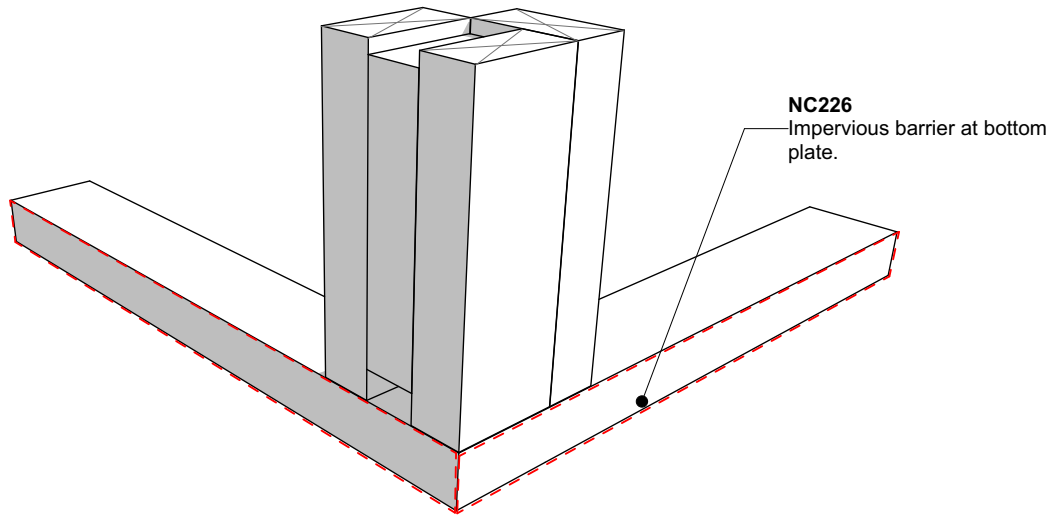
Nu-Wall cladding vertical direct fix
Typical base channel over concrete slab

NW-VDF-004b.01

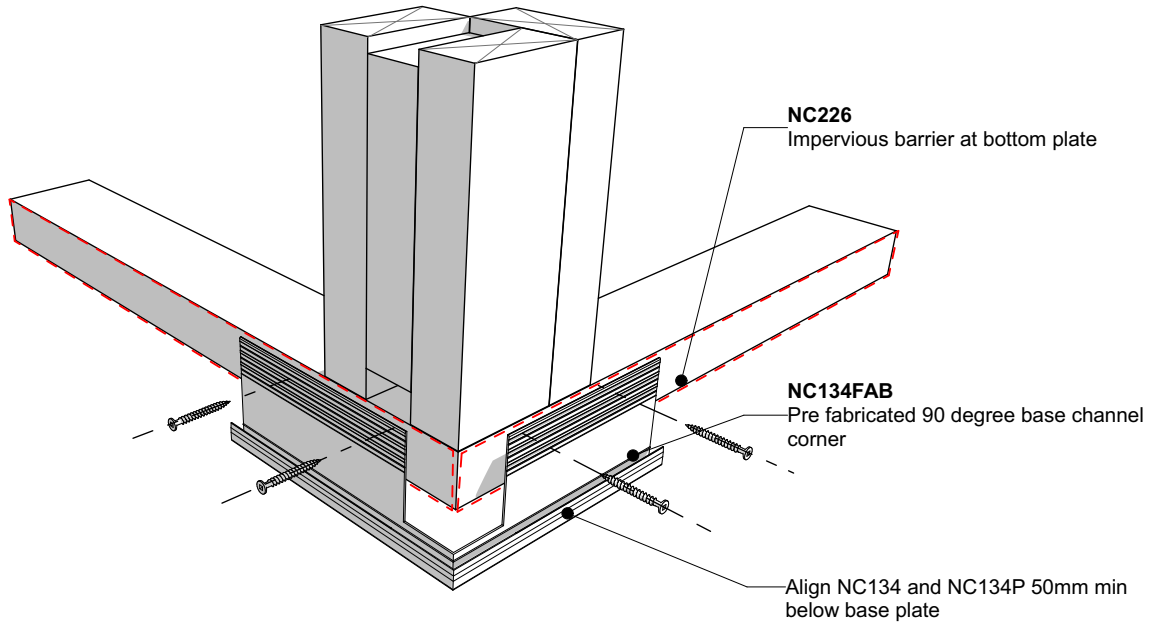
Drawn by: Nu-Wall	Date: 9/05/2022
Checked by: RL, GT	Scale: 1:2 @ A4

© 2021 copyright in this document is the property of Nu-Wall Aluminium Cladding Limited. All rights reserved. Nu-Wall is a registered trademark of Aluminium Product Brands NZ Limited

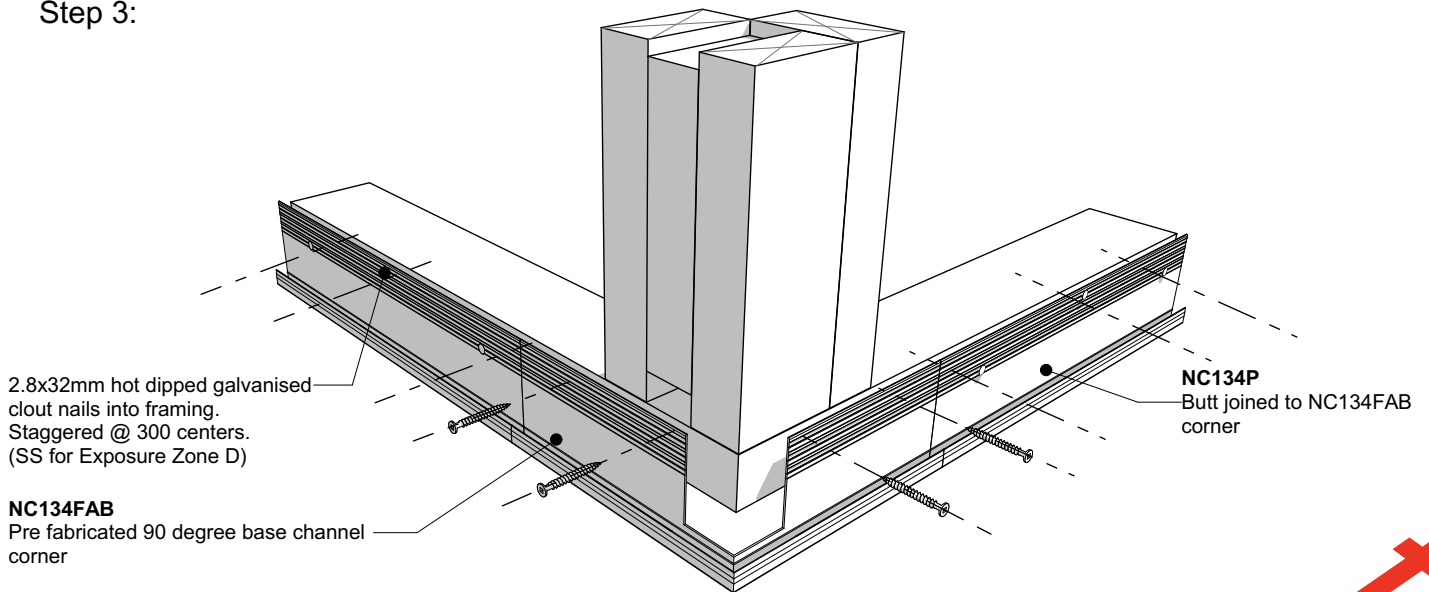
Step 1:



Step 2:



Step 3:



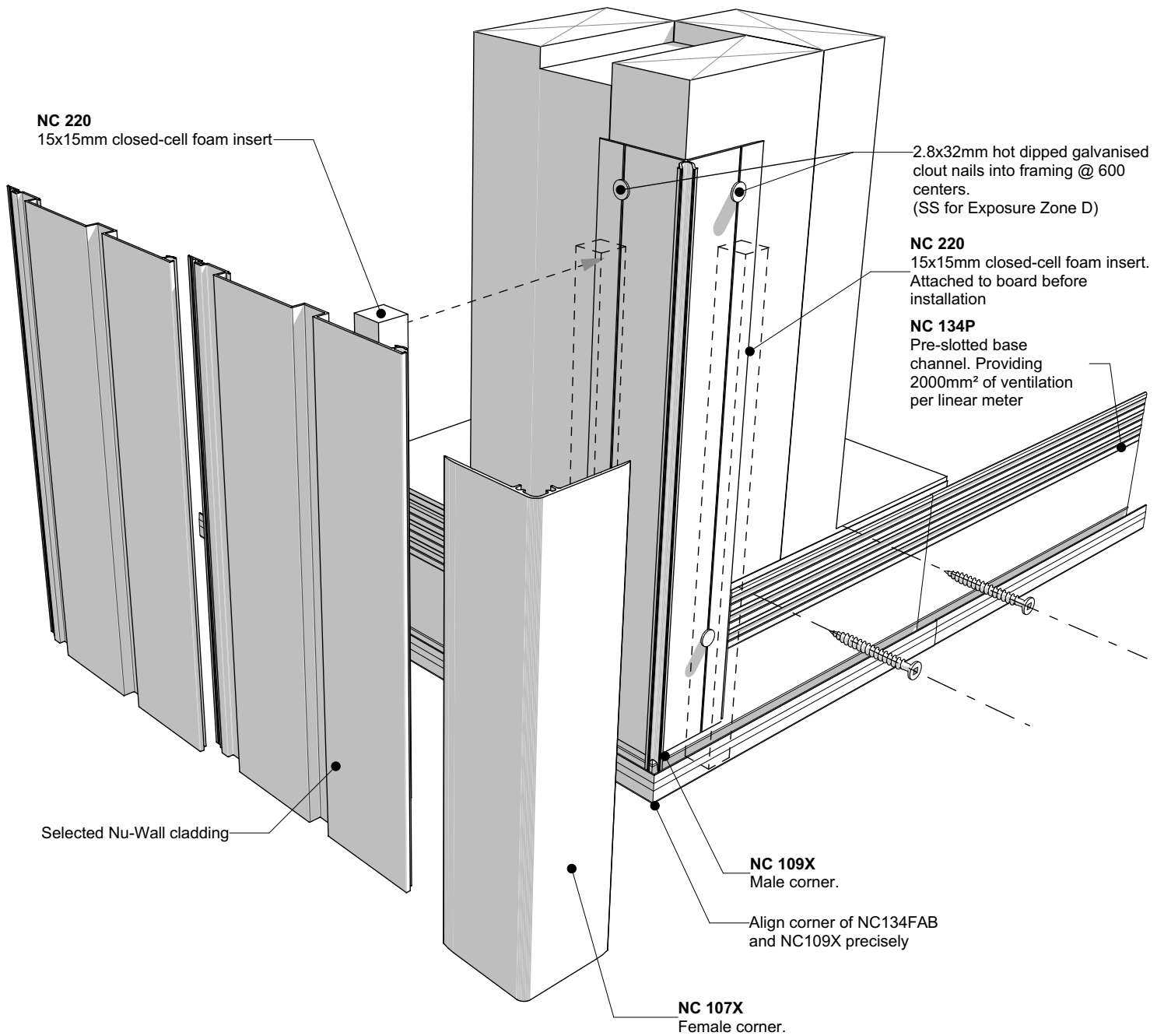
Nu-Wall cladding vertical direct fix
Pre-Fabricated 90 deg base channel corner

NW-VDF-005.01

Drawn by: Nu-Wall Date: 9/05/2022

Checked by: RL, GT Scale: NTS

© 2021 copyright in this document is the property of Nu-Wall Aluminium Cladding Limited. All rights reserved. Nu-Wall is a registered trademark of Aluminium Product Brands NZ Limited



Nu-Wall cladding vertical direct fix
Typical corner NC107X and NC109X assembly

NW-VDF-006.01

© 2021 copyright in this document is the property of Nu-Wall Aluminium Cladding Limited. All rights reserved. Nu-Wall is a registered trademark of Aluminium Product Brands NZ Limited

Drawn by: Nu-Wall	Date: 9/05/2022
Checked by: RL, GT	Scale: NTS

2.8x32mm hot dipped galvanised clout nails @ 600 centers.
(SS for Exposure Zone D)

NC203E
fixing clip @ 600 centers

Last board ripped to fit

NC 204
10g x 16mm csk Tek screw @ 600 centers through anti-crush buttons.

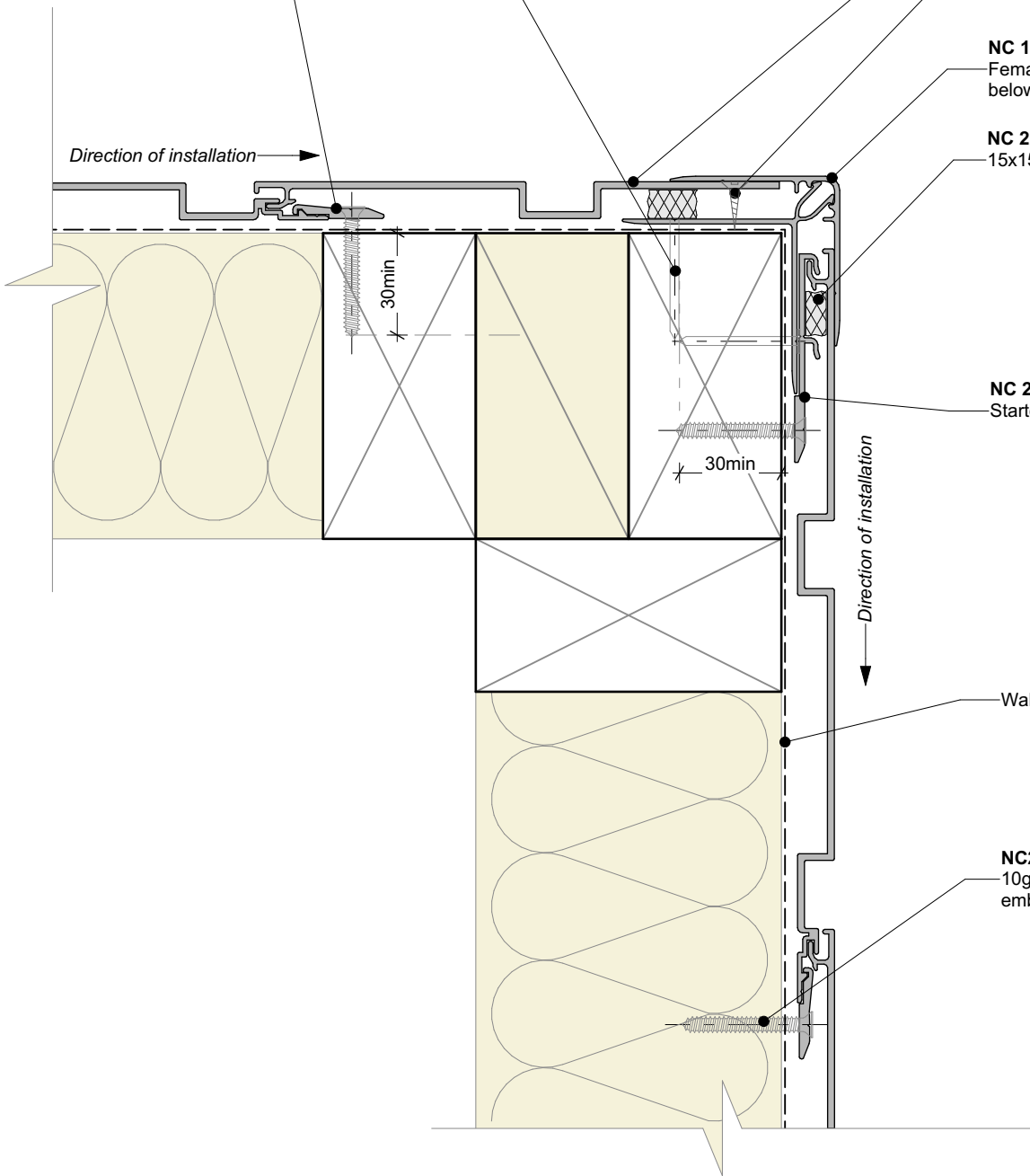
NC 107X / NC 109X
Female/Male corner. Extends 50mm below bottom plate

NC 220
15x15mm closed-cell foam insert

NC 232 F
Starter bracket

Wall underlay

NC204
10g ss csk screws with 30mm min embedment



Nu-Wall cladding vertical direct fix
Typical external 90 deg corner

NW-VDF-007.01

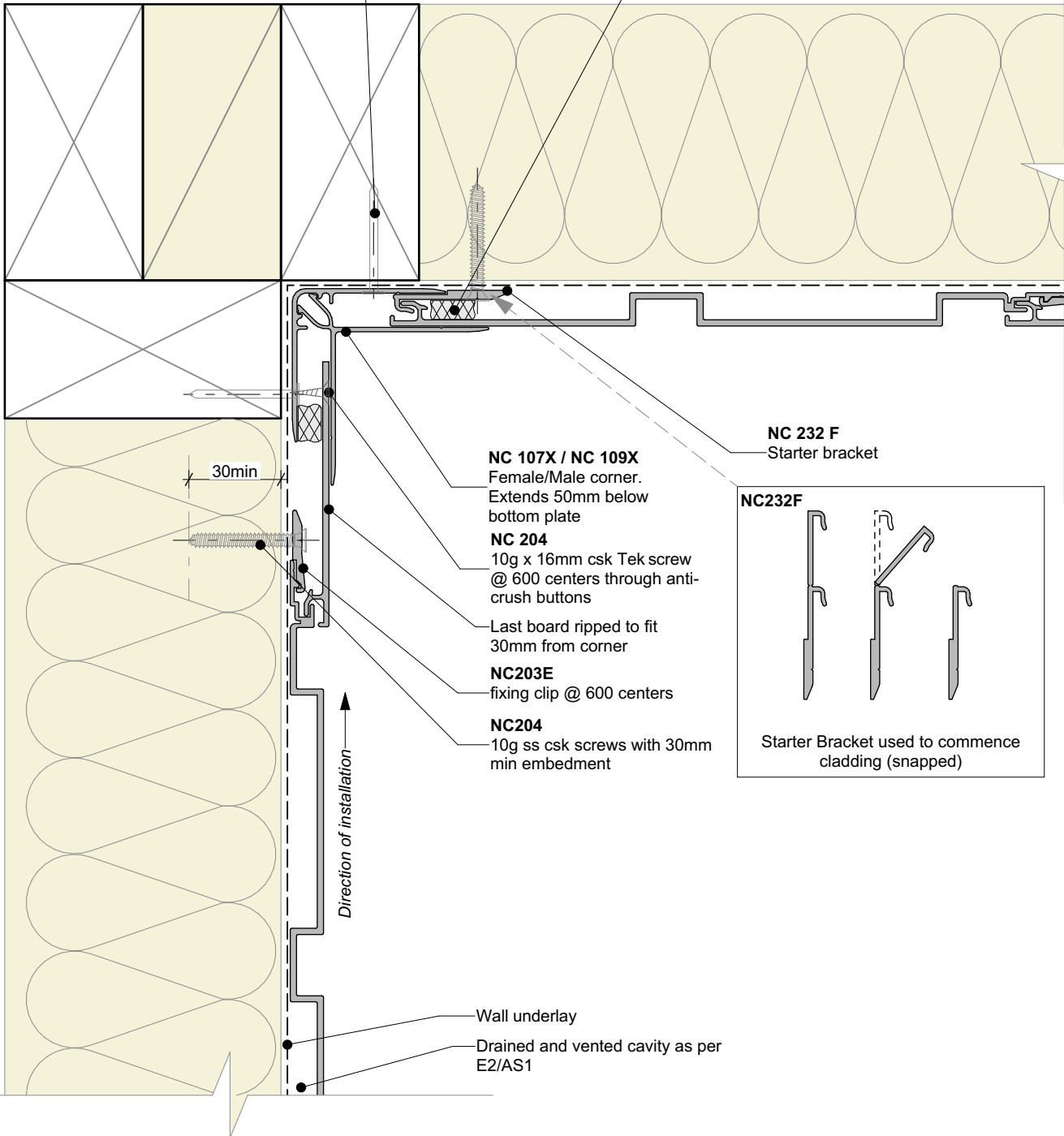
© 2021 copyright in this document is the property of Nu-Wall Aluminium Cladding Limited. All rights reserved. Nu-Wall is a registered trademark of Aluminium Product Brands NZ Limited

Drawn by: Nu-Wall Date: 9/05/2022

Checked by: RL, GT Scale: 1:2 @ A4

2.8x32mm hot dipped galvanised clout nails @ 600 centers.
(SS for Exposure Zone D)

NC 220
15x15mm closed-cell foam insert



NC 232 F
Starter bracket

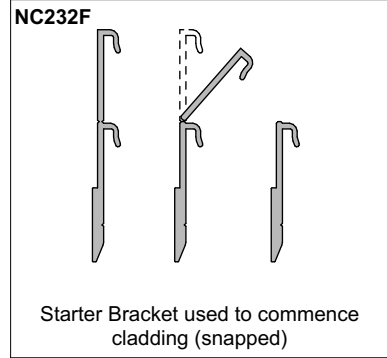
NC 107X / NC 109X
Female/Male corner.
Extends 50mm below
bottom plate

NC 204
10g x 16mm csk Tek screw
@ 600 centers through anti-
crush buttons

Last board ripped to fit
30mm from corner

NC 203E
fixing clip @ 600 centers

NC 204
10g ss csk screws with 30mm
min embedment



Wall underlay

Drained and vented cavity as per
E2/AS1



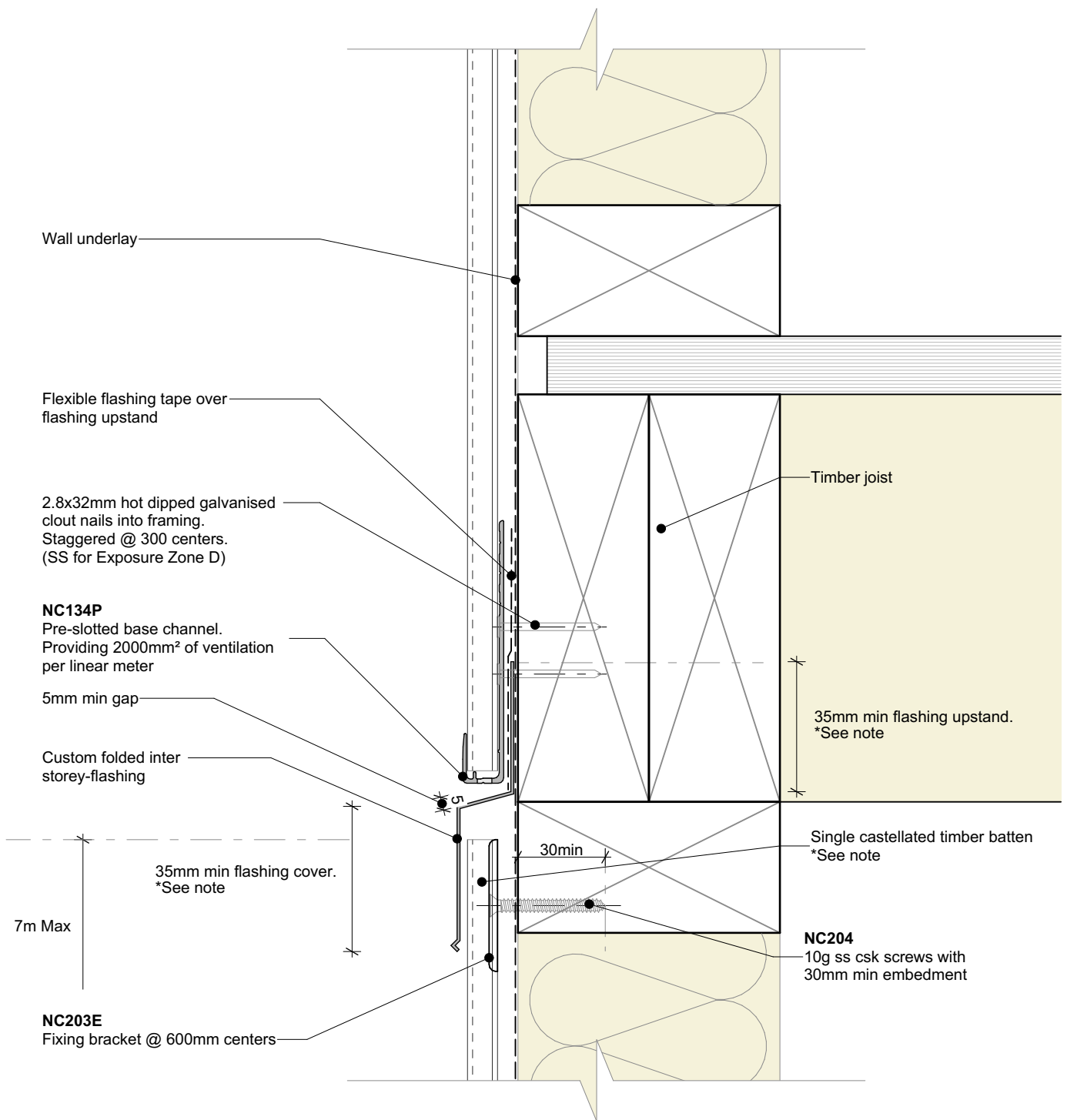
Nu-Wall cladding vertical direct fix
Internal 90 deg corner using NC107X and NC109X

NW-VDF-008.01

© 2021 copyright in this document is the property of Nu-Wall Aluminium Cladding Limited. All rights reserved. Nu-Wall is a registered trademark of Aluminium Product Brands NZ Limited

Drawn by: Nu-Wall Date: 9/05/2022

Checked by: RL, GT Scale: 1:2 @ A4



General note:

- This detail is to be used to limit continuous cavities to the lesser of two storeys or 7meters. Refer E2/AS1 Table 7 for flashing cover requirements

Inter storey flashing note:

- Nu-Wall offers pre-fabricated internal, external and stop-end sections. Contact Nu-Wall for assistance



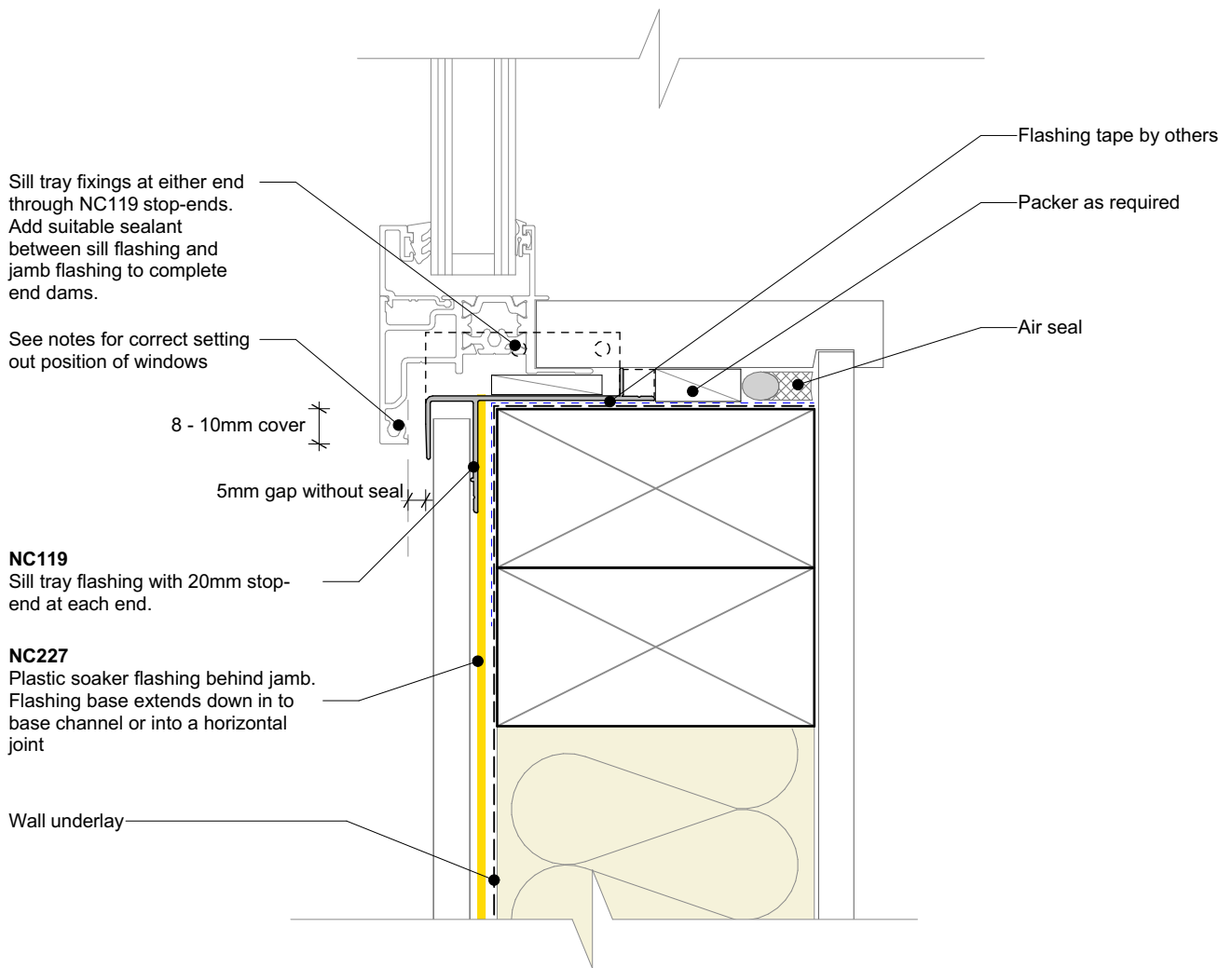
Nu-Wall cladding vertical direct fix
Typical inter storey or horizontal joint

NW-VDF-009.01

Drawn by: Nu-Wall Date: 9/05/2022

Checked by: RL, GT Scale: 1:2 @ A4

© 2021 copyright in this document is the property of Nu-Wall Aluminium Cladding Limited. All rights reserved. Nu-Wall is a registered trademark of Aluminium Product Brands NZ Limited



General note:

- Cladding fixings omitted for clarity

Window setting out notes: (from face of air barrier)

- 24mm from wall underlay to window fin

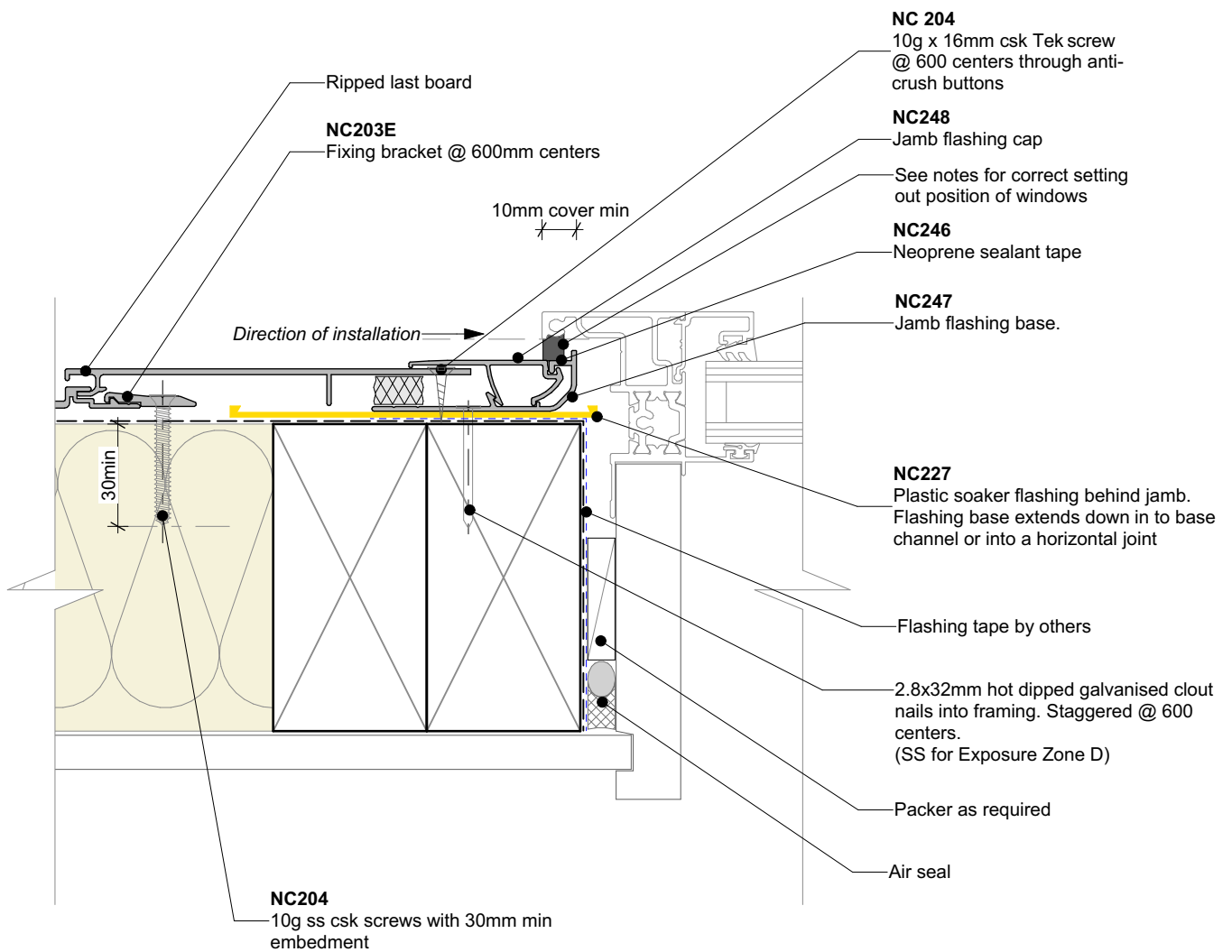


Nu-Wall cladding vertical direct fix
Typical sill section - NC247 and NC248 assembly

NW-VDF-010.01

Drawn by: Nu-Wall	Date: 9/05/2022
Checked by: RL, GT	Scale: 1:2 @ A4

© 2021 copyright in this document is the property of Nu-Wall Aluminium Cladding Limited. All rights reserved. Nu-Wall is a registered trademark of Aluminium Product Brands NZ Limited



General note:

- Cladding fixings omitted for clarity

Window setting out notes: (from face of air barrier)

- 24mm from underlay to window fin

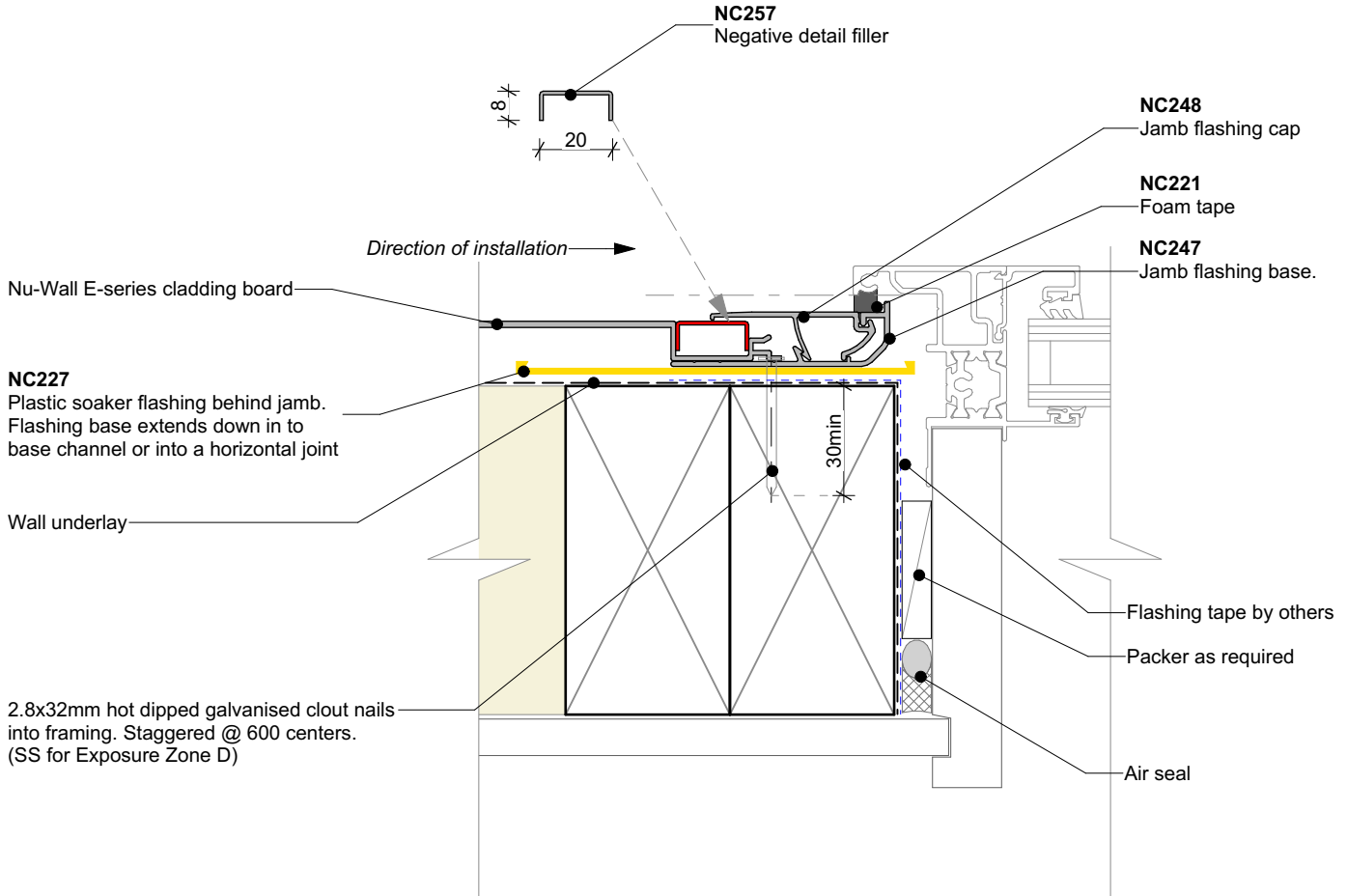


Nu-Wall cladding vertical direct fix
Typical jamb section - NC247 and NC248 assembly

NW-VDF-011.01

Drawn by: Nu-Wall	Date: 9/05/2022
Checked by: RL, GT	Scale: 1:2 @ A4

© 2021 copyright in this document is the property of Nu-Wall Aluminium Cladding Limited. All rights reserved. Nu-Wall is a registered trademark of Aluminium Product Brands NZ Limited



General note:

- Cladding fixings omitted for clarity

Window setting out notes: (from face of air barrier)

- 24mm from underlay to window fin

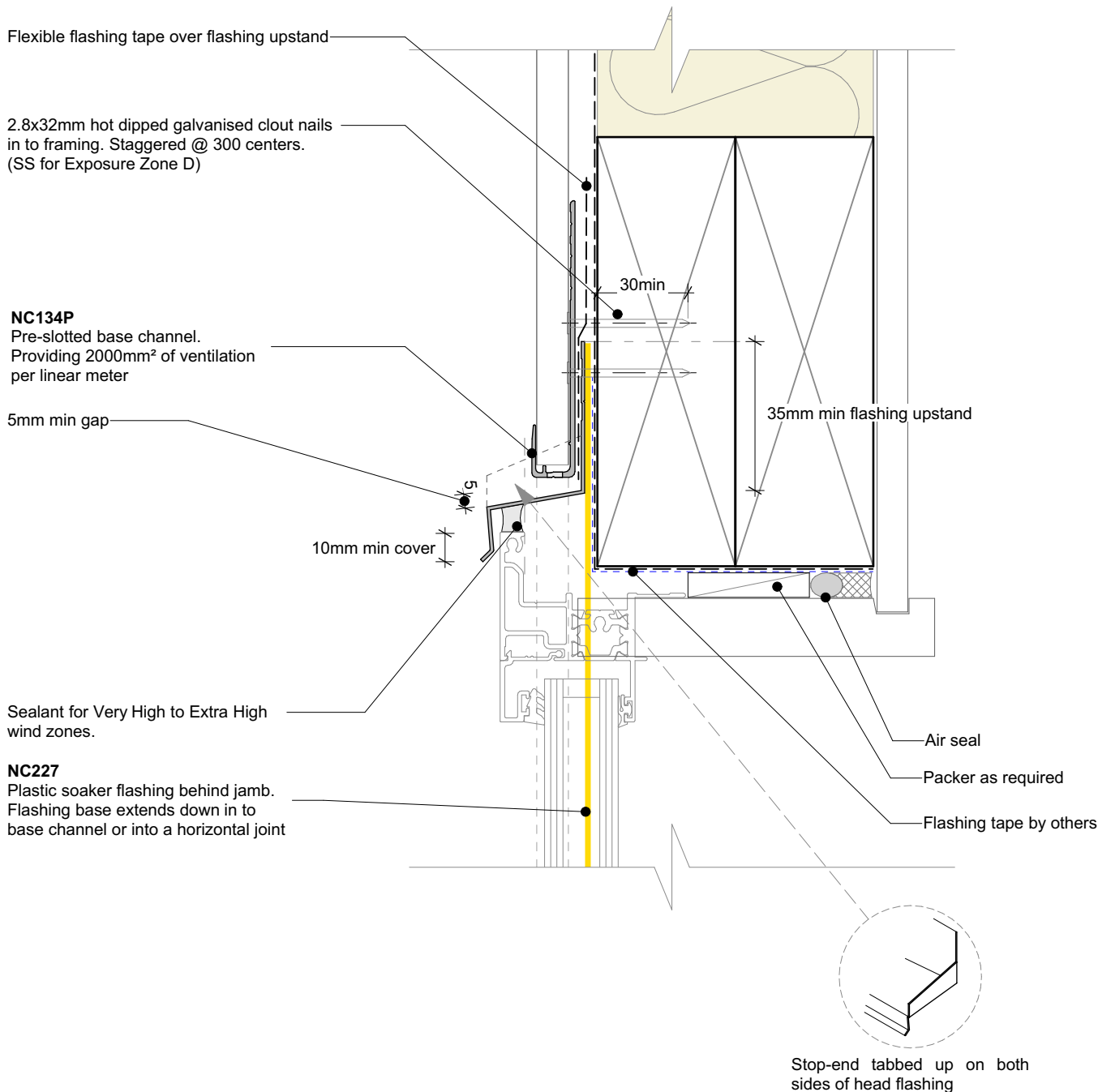


Nu-Wall cladding vertical direct fix
Typical jamb section with negative detail filler

NW-VDF-012.01

Drawn by: Nu-Wall	Date: 9/05/2022
Checked by: RL, GT	Scale: 1:2 @ A4

© 2021 copyright in this document is the property of Nu-Wall Aluminium Cladding Limited. All rights reserved. Nu-Wall is a registered trademark of Aluminium Product Brands NZ Limited



General note:

- Cladding fixings omitted for clarity

Window setting out notes: (from face of air barrier)

- 24mm from underlay to window fin



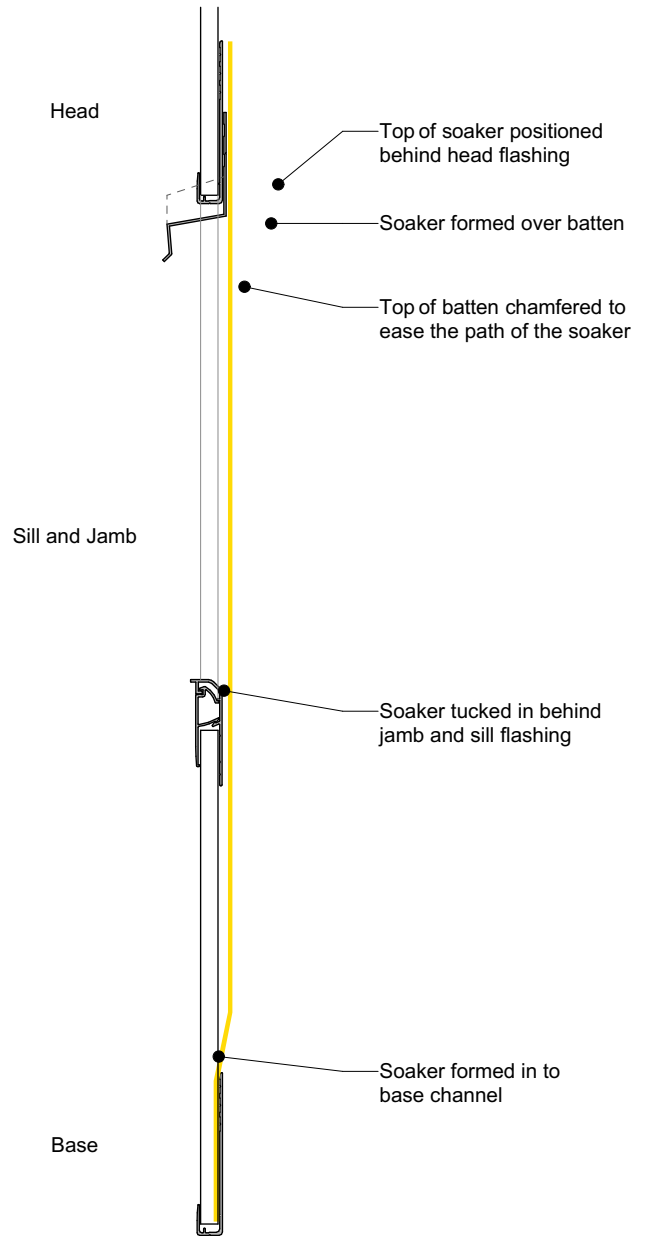
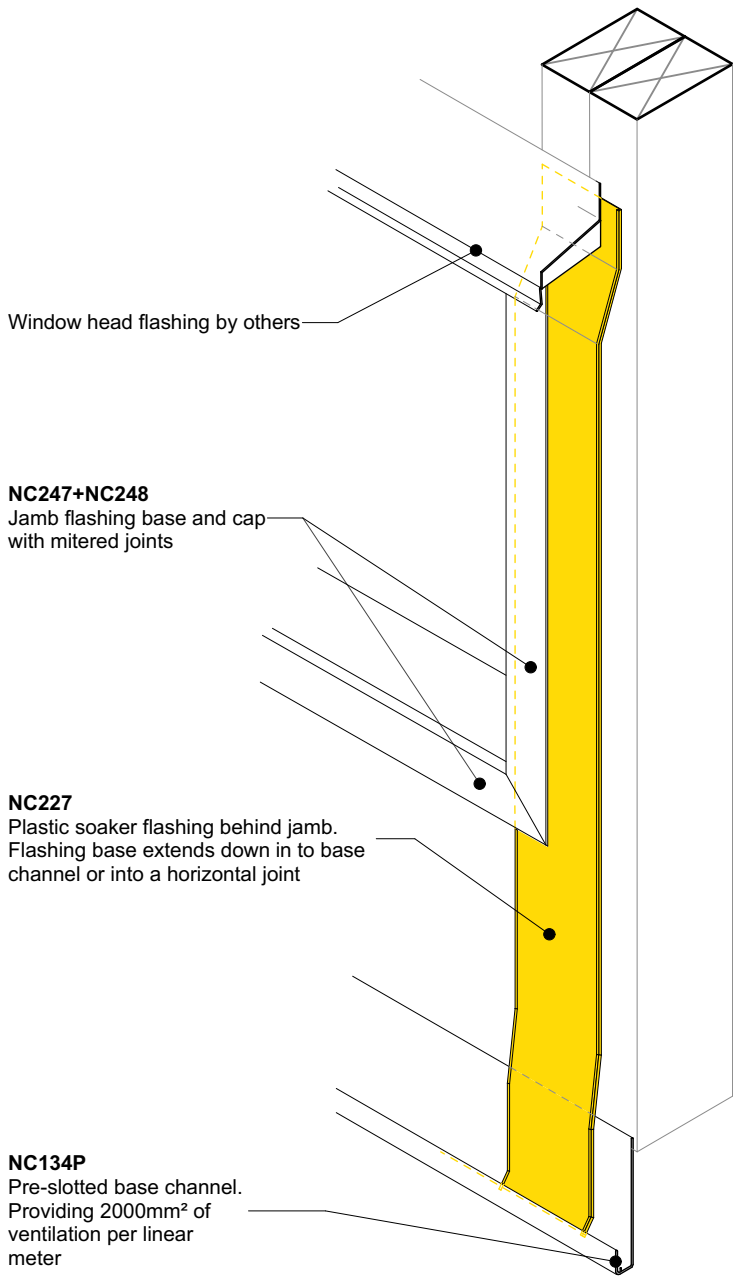
Nu-Wall cladding vertical direct fix
Typical head section

NW-VDF-013.01

Drawn by: Nu-Wall Date: 9/05/2022

Checked by: RL, GT Scale: 1:2 @ A4

© 2021 copyright in this document is the property of Nu-Wall Aluminium Cladding Limited. All rights reserved. Nu-Wall is a registered trademark of Aluminium Product Brands NZ Limited



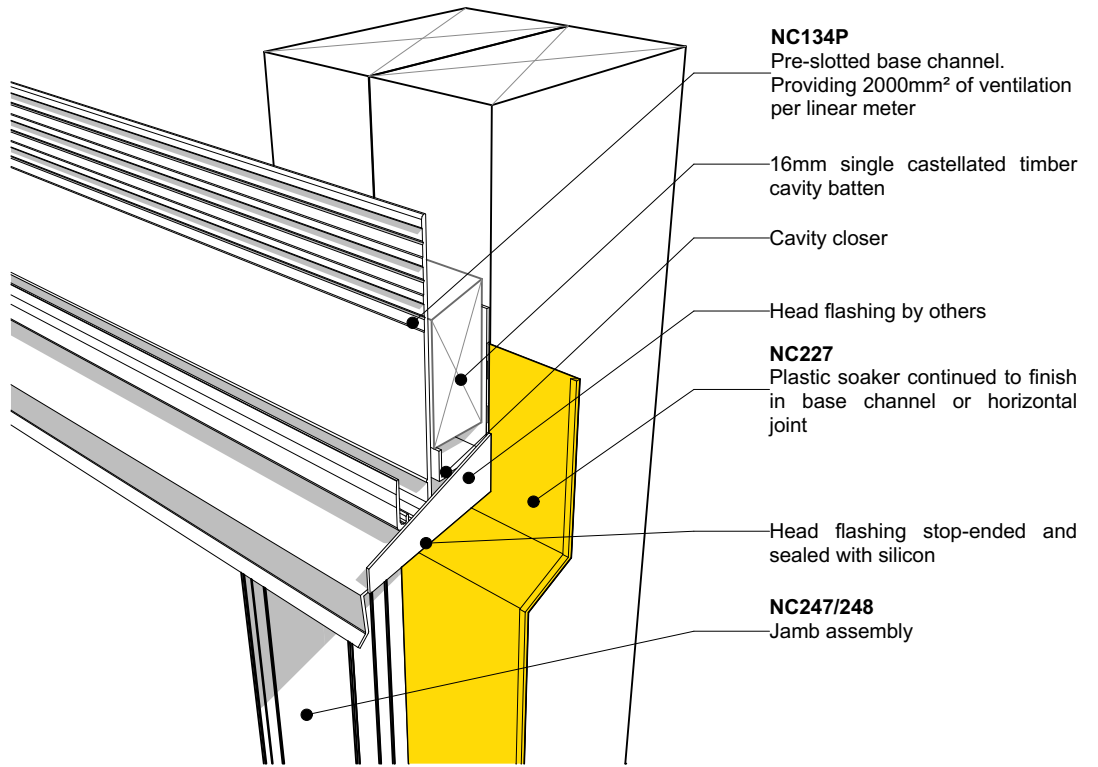
Nu-Wall cladding vertical direct fix
Soaker installation to window jamb

NW-VDF-014.01

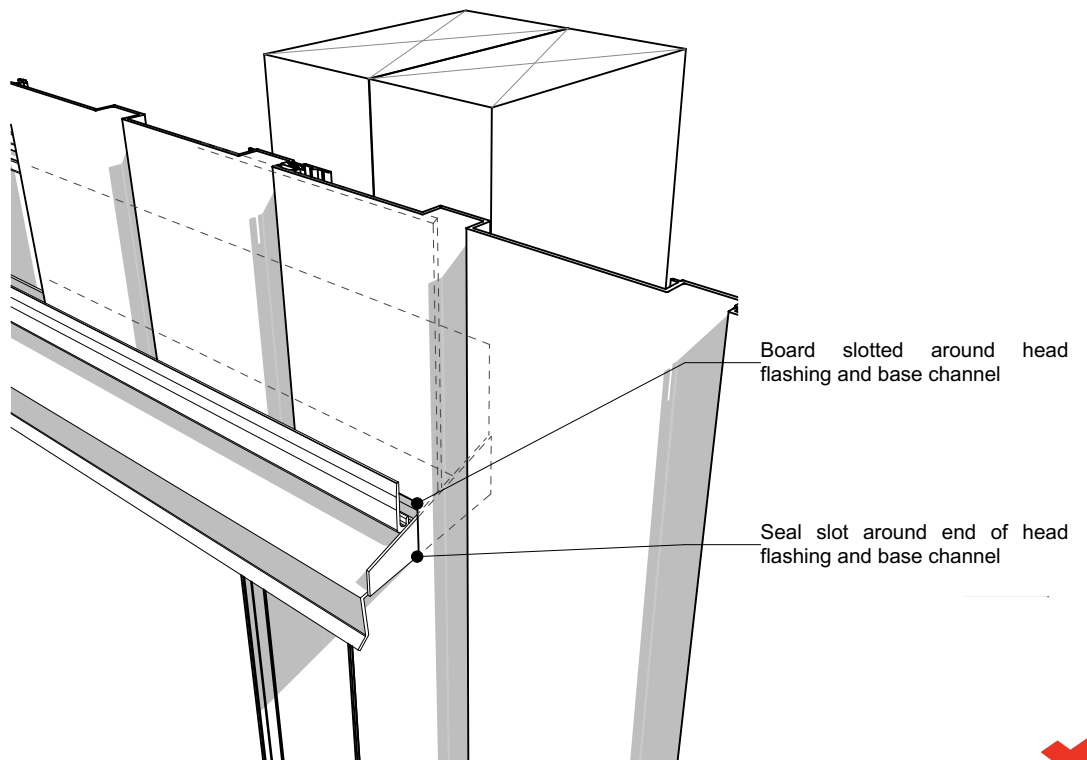
Drawn by: Nu-Wall	Date: 9/05/2022
Checked by: RL, GT	Scale: 1:2 @ A4

© 2021 copyright in this document is the property of Nu-Wall Aluminium Cladding Limited. All rights reserved. Nu-Wall is a registered trademark of Aluminium Product Brands NZ Limited

Junction prior to cladding around window head



Junction after cladding around window head



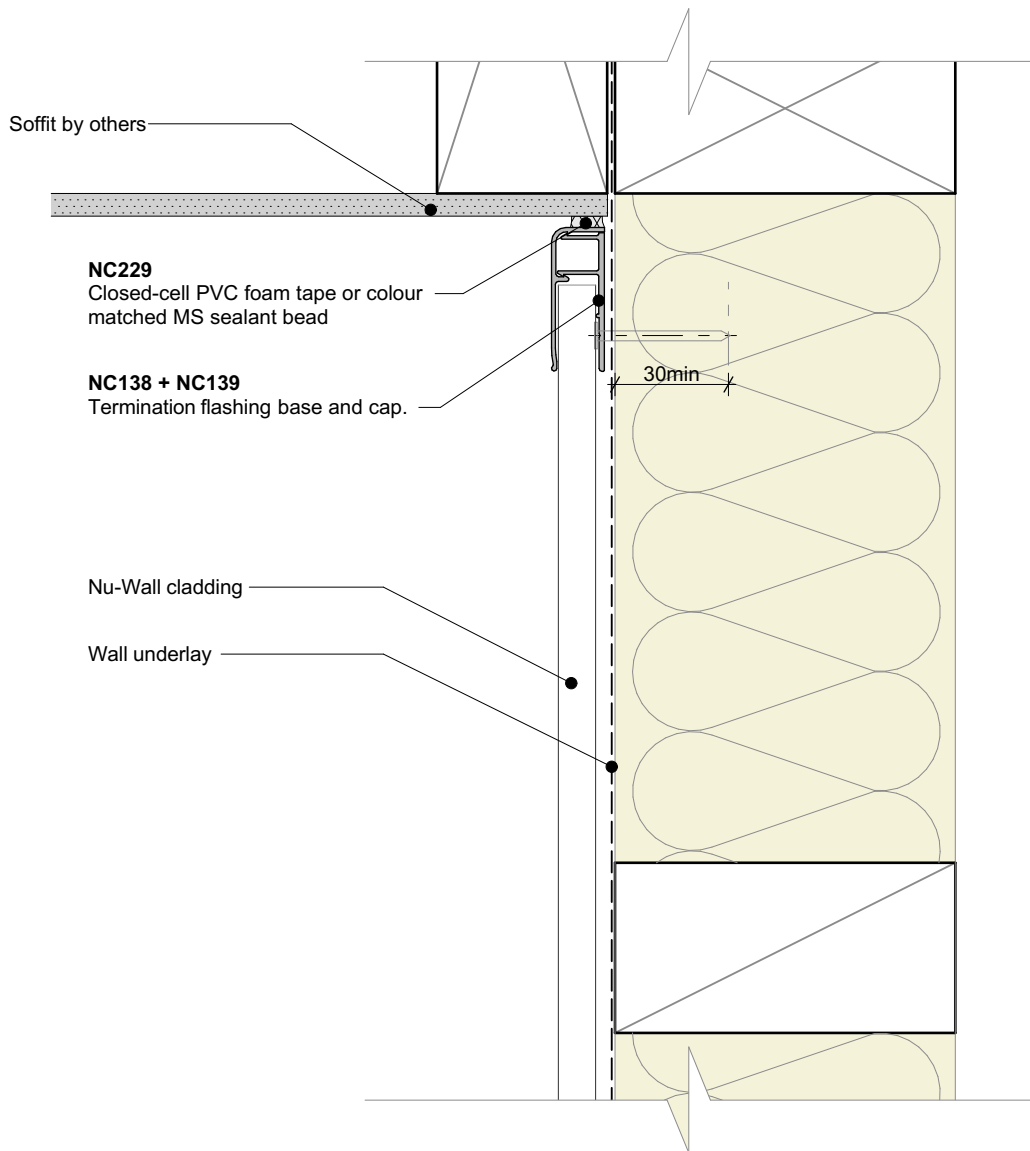
Nu-Wall cladding vertical direct fix
Typical head flashing end detail

© 2021 copyright in this document is the property of Nu-Wall Aluminium Cladding Limited. All rights reserved. Nu-Wall is a registered trademark of Aluminium Product Brands NZ Limited

NW-VDF-015.01

Drawn by: Nu-Wall Date: 9/05/2022

Checked by: RL, GT Scale: NTS



General note:
 • Cladding fixings omitted for clarity

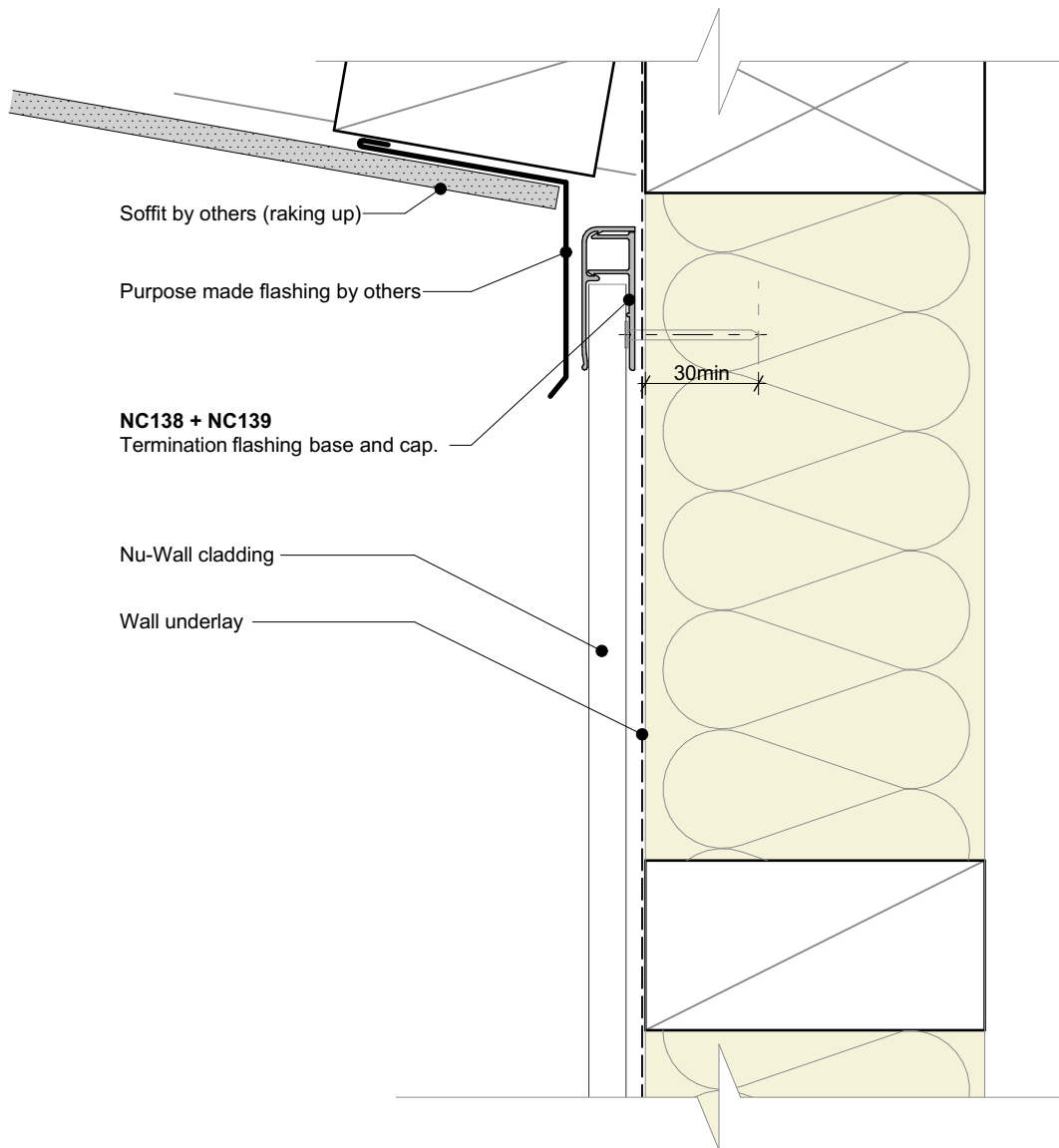


Nu-Wall cladding vertical direct fix
 Typical soffit trim

NW-VDF-016a.01

Drawn by: Nu-Wall	Date: 9/05/2022
Checked by: RL, GT	Scale: 1:2 @ A4

© 2021 copyright in this document is the property of Nu-Wall Aluminium Cladding Limited. All rights reserved. Nu-Wall is a registered trademark of Aluminium Product Brands NZ Limited



General note:
 • Cladding fixings omitted for clarity



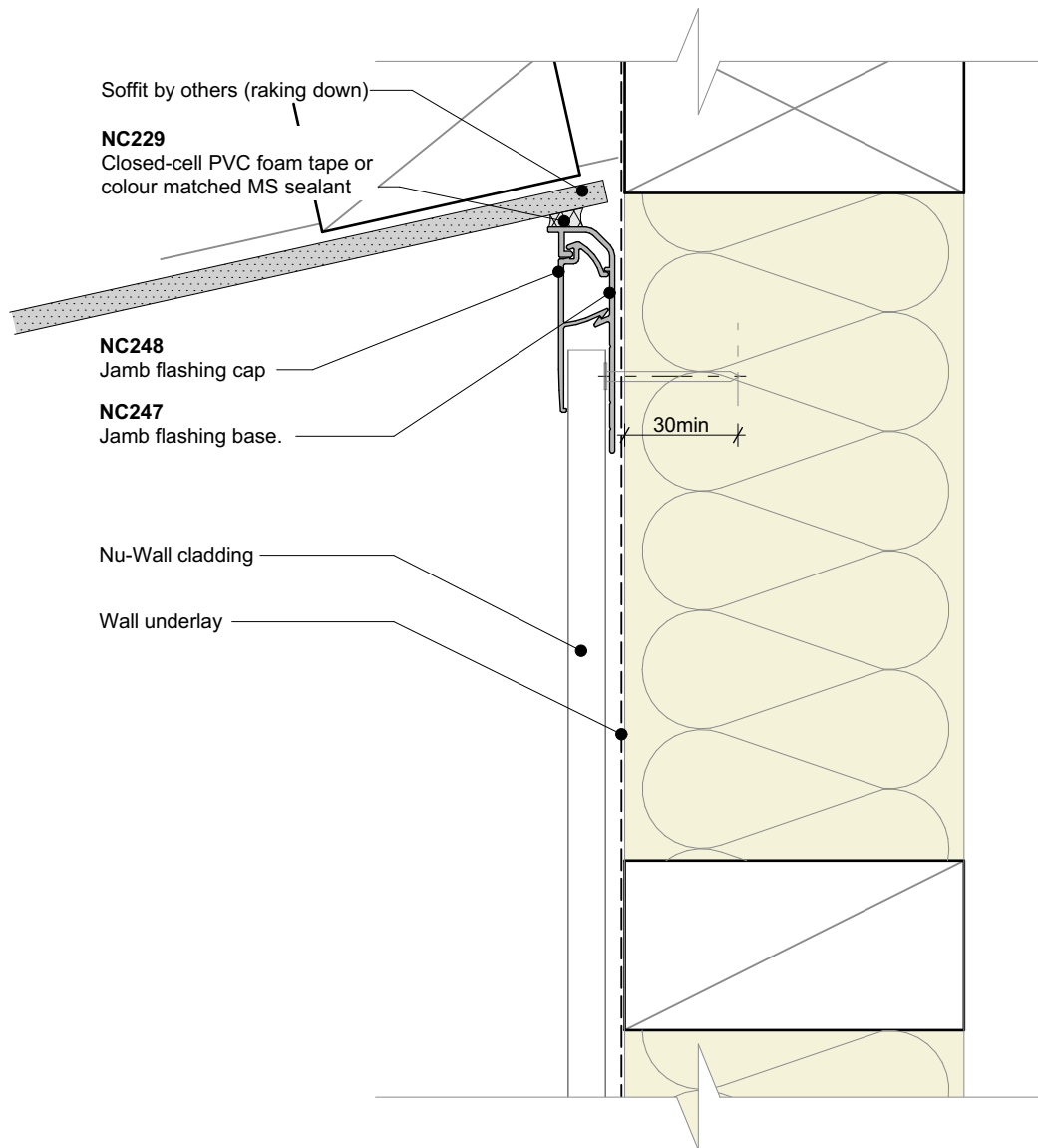
Nu-Wall cladding vertical direct fix
 Typical raking soffit

NW-VDF-016b.01

Drawn by: Nu-Wall Date: 9/05/2022

Checked by: RL, GT Scale: 1:2 @ A4

© 2021 copyright in this document is the property of Nu-Wall Aluminium Cladding Limited. All rights reserved. Nu-Wall is a registered trademark of Aluminium Product Brands NZ Limited



General note:
 • Cladding fixings omitted for clarity



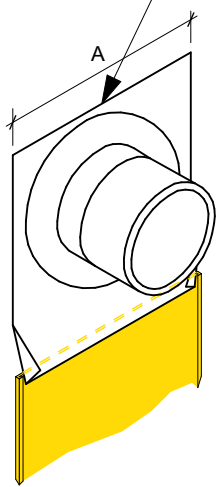
Nu-Wall cladding vertical direct fix
 Typical inverse raking soffit

NW-VDF-016c.01

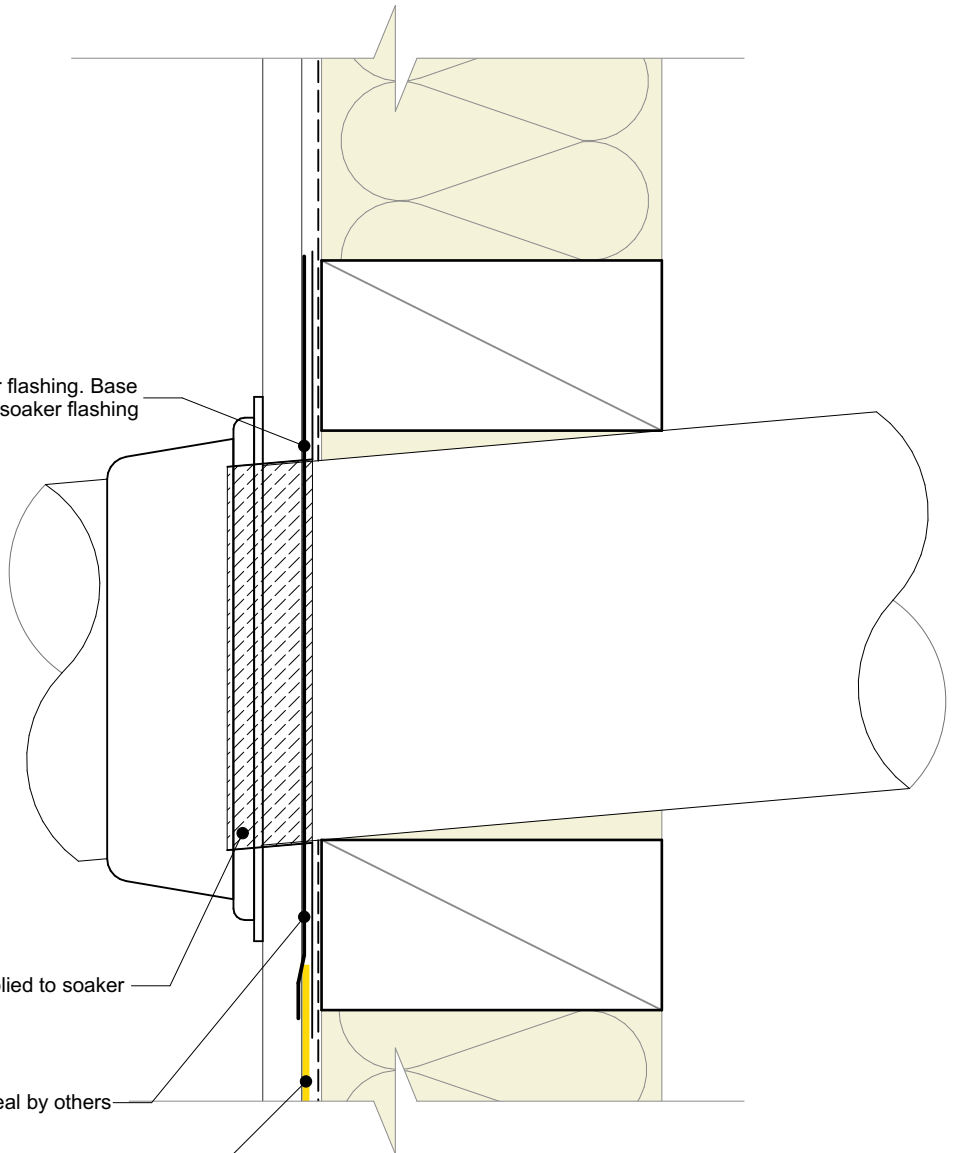
Drawn by: Nu-Wall	Date: 9/05/2022
Checked by: RL, GT	Scale: 1:2 @ A4

© 2021 copyright in this document is the property of Nu-Wall Aluminium Cladding Limited. All rights reserved. Nu-Wall is a registered trademark of Aluminium Product Brands NZ Limited

A = Pipe diameter + 100mm



0.7mm Aluminium soaker flashing. Base tapered to fit in to plastic soaker flashing



Flexible flashing tape applied to soaker and pipe

Proprietary penetration seal by others

NC227
Plastic soaker flashing. Base extends down in to base channel.

General note:
• Cladding fixings omitted for clarity

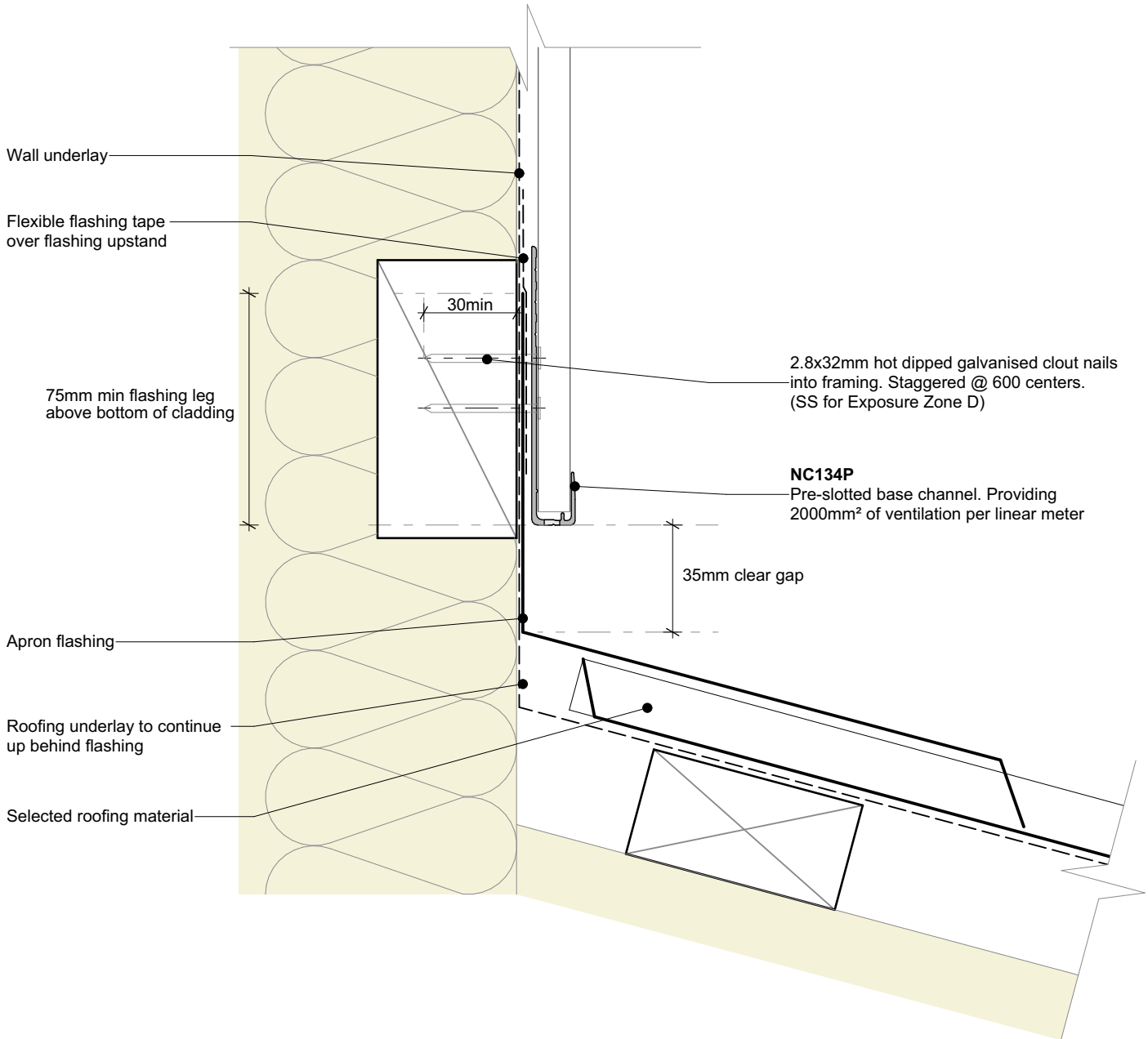


Nu-Wall cladding vertical direct fix
Typical pipe penetration

NW-VDF-017.01

Drawn by: Nu-Wall	Date: 9/05/2022
Checked by: RL, GT	Scale: 1:2 @ A4

© 2021 copyright in this document is the property of Nu-Wall Aluminium Cladding Limited. All rights reserved. Nu-Wall is a registered trademark of Aluminium Product Brands NZ Limited



General note:
 • Cladding fixings omitted for clarity

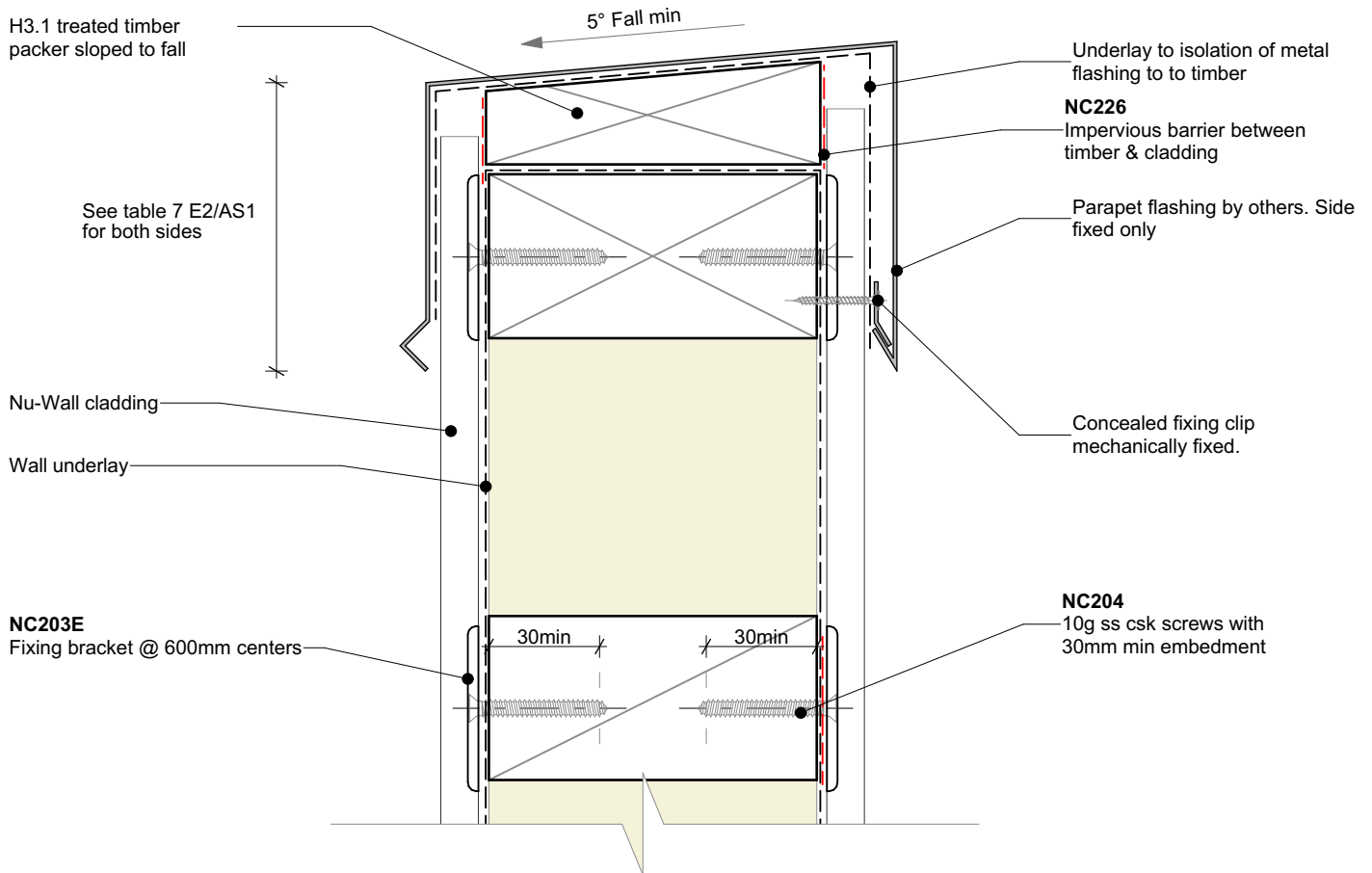


Nu-Wall cladding vertical direct fix
 Typical apron, roof to wall junction

NW-VDF-018.01

Drawn by: Nu-Wall	Date: 9/05/2022
Checked by: RL, GT	Scale: 1:2 @ A4

© 2021 copyright in this document is the property of Nu-Wall Aluminium Cladding Limited. All rights reserved. Nu-Wall is a registered trademark of Aluminium Product Brands NZ Limited



General note:
 • Cladding fixings omitted for clarity

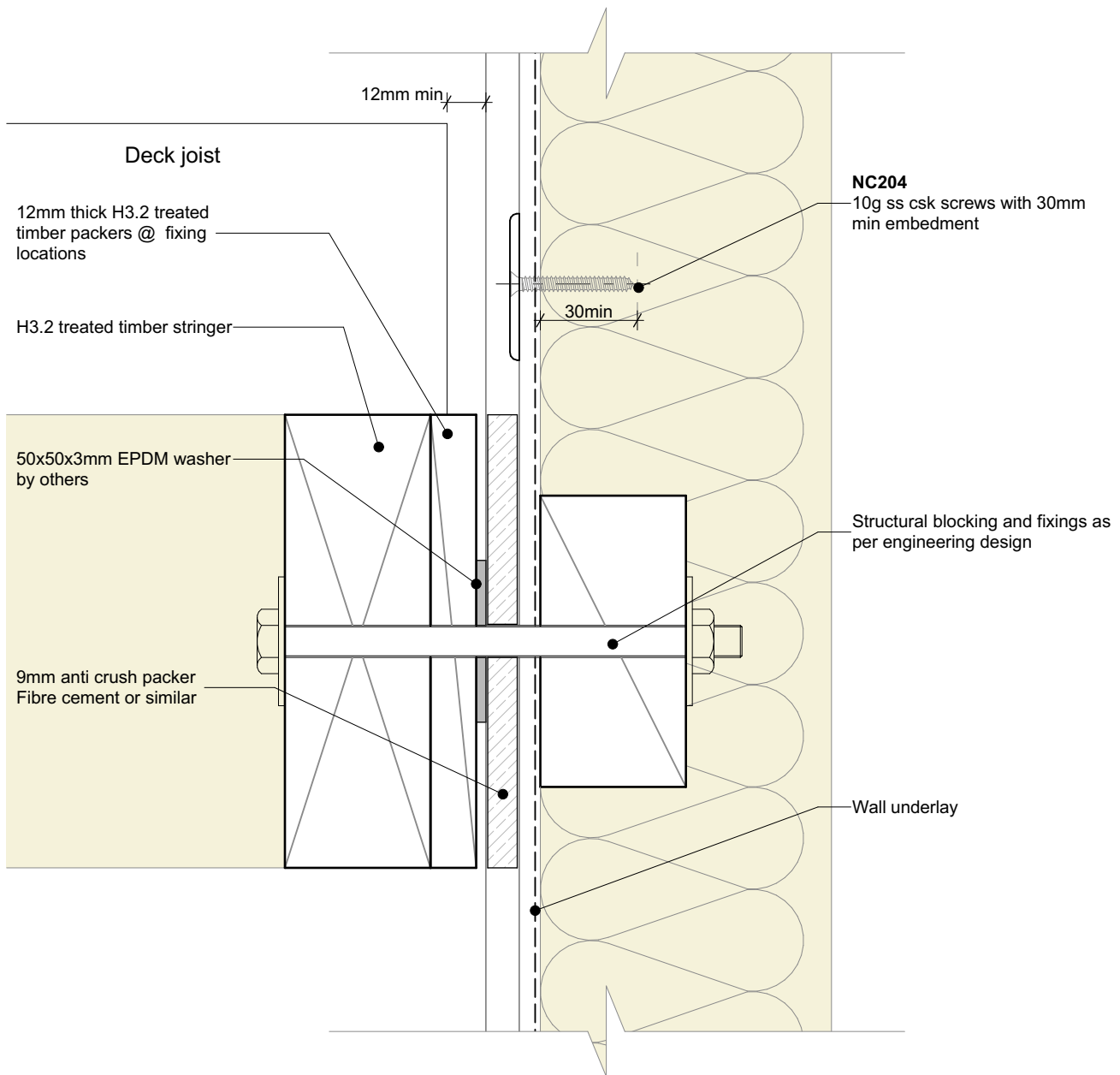


Nu-Wall cladding vertical direct fix
 Typical parapet to wall

NW-VDF-019.01

Drawn by: Nu-Wall	Date: 9/05/2022
Checked by: RL, GT	Scale: 1:2 @ A4

© 2021 copyright in this document is the property of Nu-Wall Aluminium Cladding Limited. All rights reserved. Nu-Wall is a registered trademark of Aluminium Product Brands NZ Limited



Important:

- Nu-Wall is a hollow profile and requires packers to prevent crushing under pressure

General note:

- Cladding fixings omitted for clarity

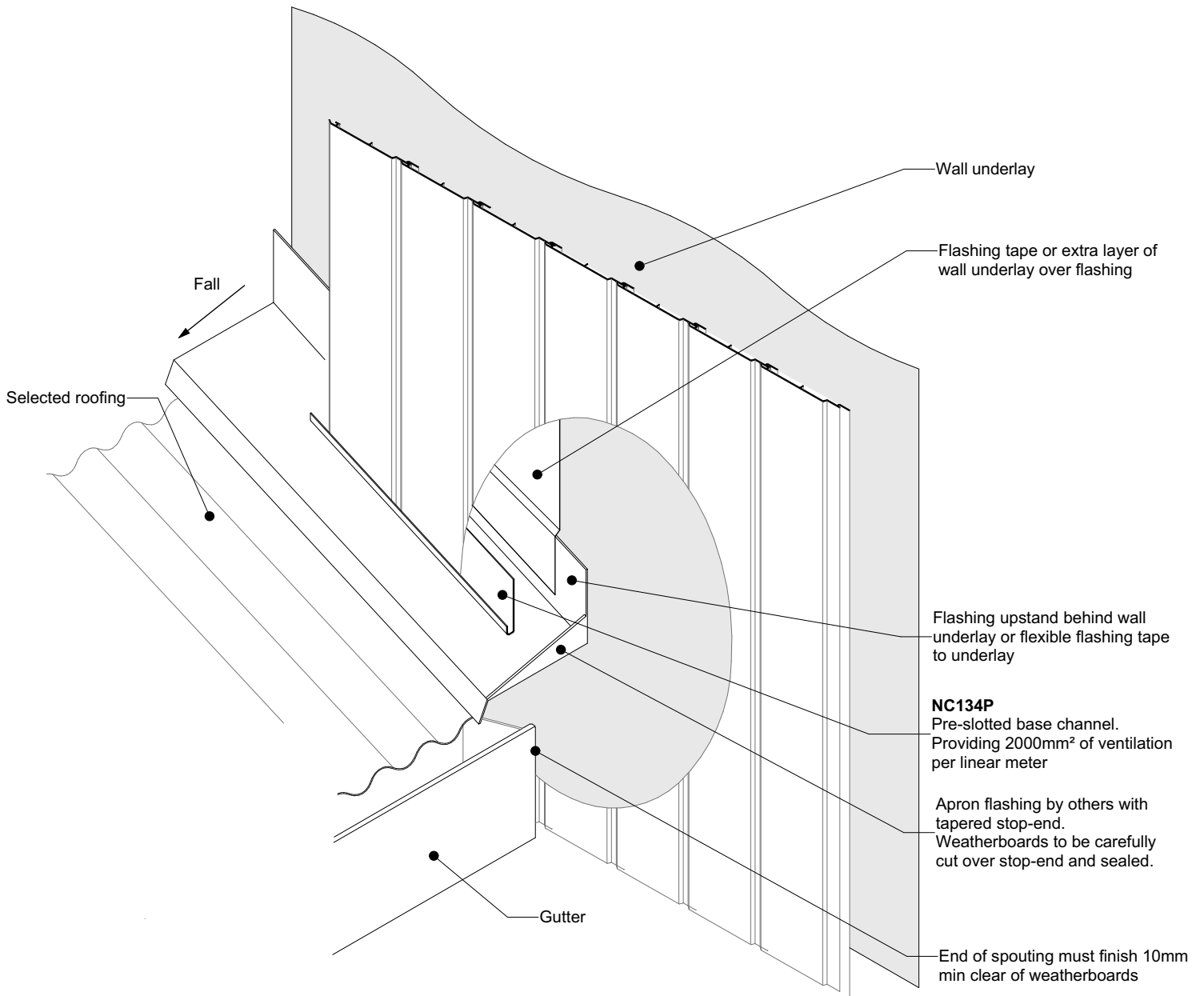


Nu-Wall cladding vertical direct fix
Typical deck to wall junction

NW-VDF-020.01

Drawn by: Nu-Wall	Date: 9/05/2022
Checked by: RL, GT	Scale: 1:2 @ A4

© 2021 copyright in this document is the property of Nu-Wall Aluminium Cladding Limited. All rights reserved. Nu-Wall is a registered trademark of Aluminium Product Brands NZ Limited



General note:
 • Cladding fixings omitted for clarity

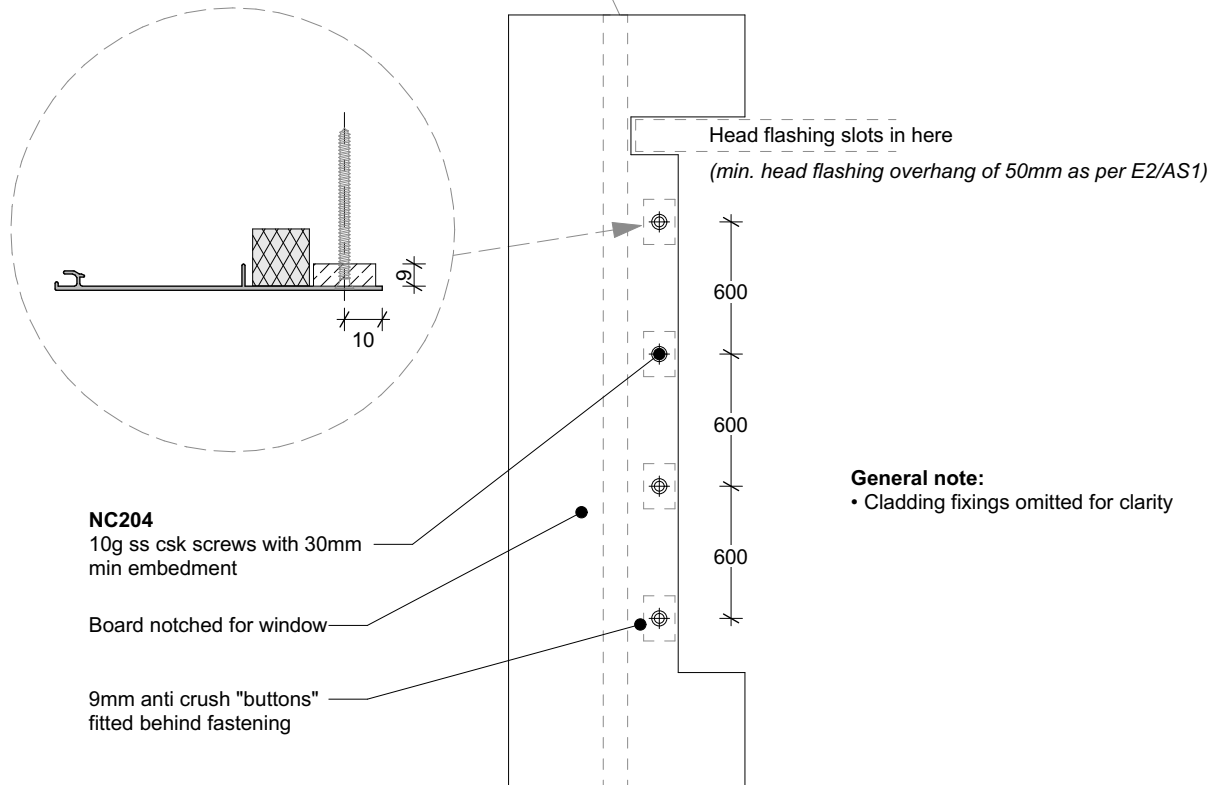
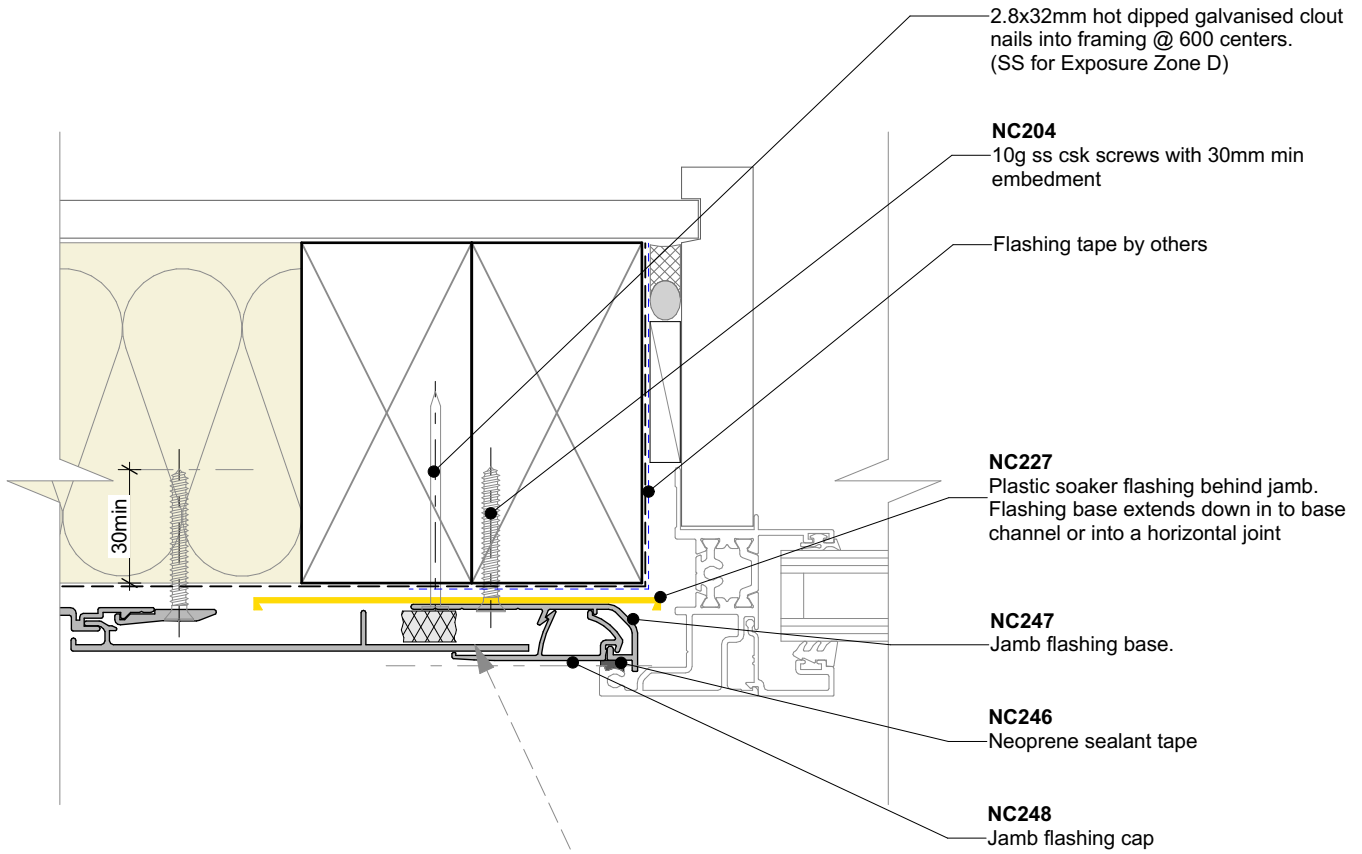


Nu-Wall cladding vertical direct fix
 Typical roof and gutter to wall junction

NW-VDF-021.01

Drawn by: Nu-Wall	Date: 9/05/2022
Checked by: RL, GT	Scale: 1:2 @ A4

© 2021 copyright in this document is the property of Nu-Wall Aluminium Cladding Limited. All rights reserved. Nu-Wall is a registered trademark of Aluminium Product Brands NZ Limited



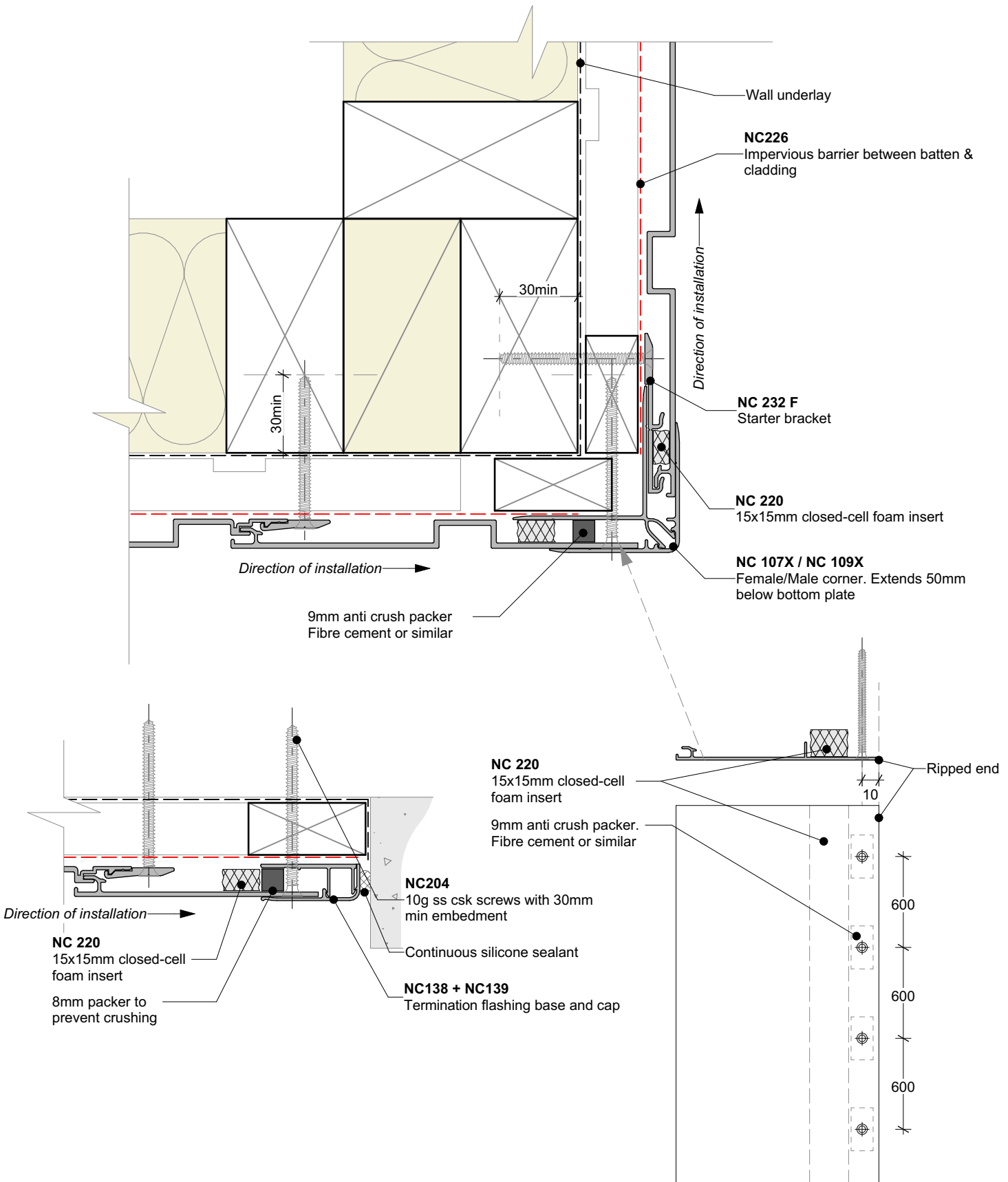
Nu-Wall cladding vertical direct fix
Notching board around window jamb

NW-VDF-022.01

Drawn by: Nu-Wall Date: 9/05/2022

Checked by: RL, GT Scale: NTS

© 2021 copyright in this document is the property of Nu-Wall Aluminium Cladding Limited. All rights reserved. Nu-Wall is a registered trademark of Aluminium Product Brands NZ Limited



General note:

- Cladding fixings omitted for clarity
- When finishing a wall with a ripped board, the board must be fixed with a counter sunk screw @ 600mm centres

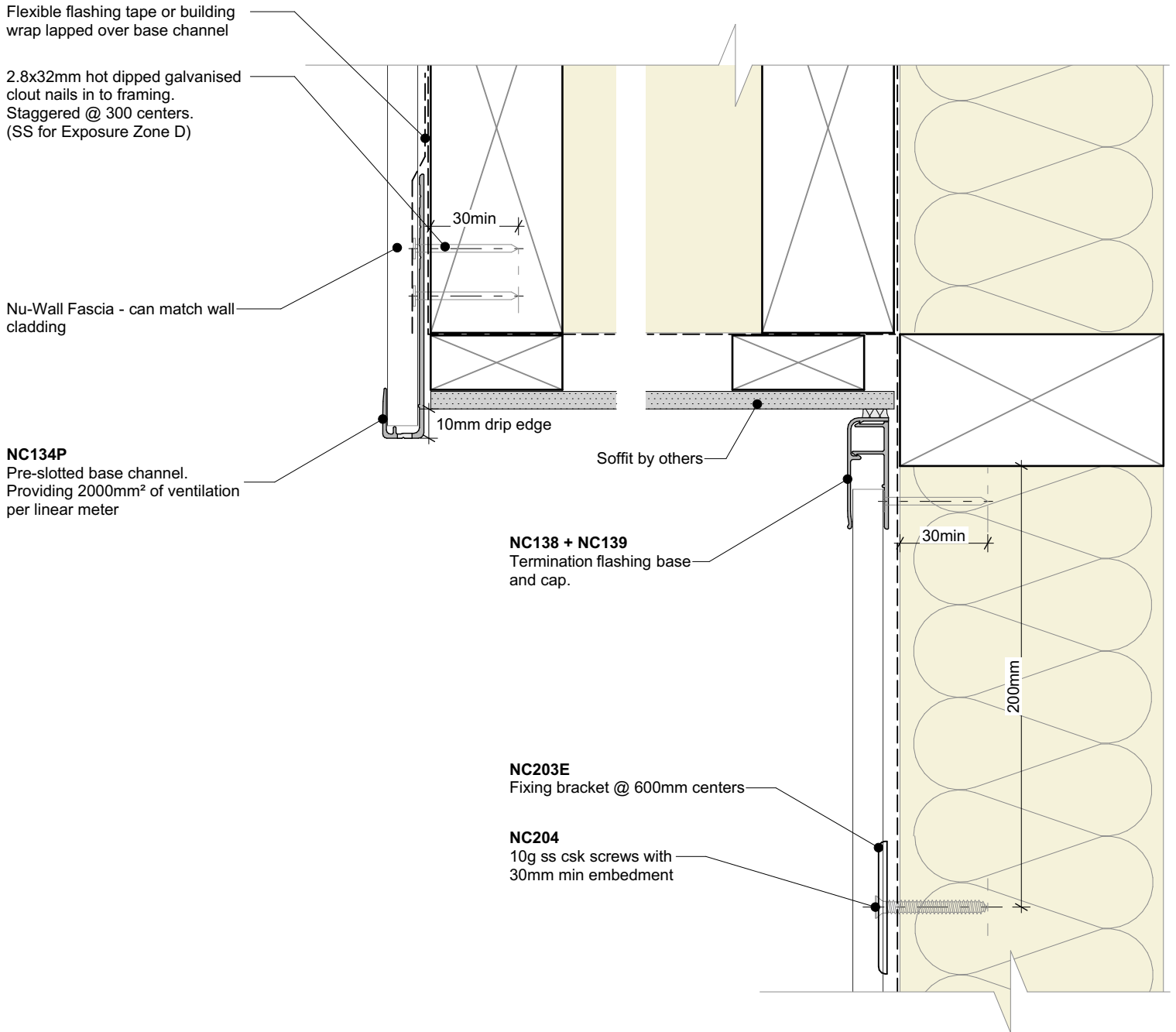


Nu-Wall cladding vertical direct fix
Ripped board to end of wall junction

NW-VDF-023.01

Drawn by: Nu-Wall	Date: 9/05/2022
Checked by: RL, GT	Scale: NTS

© 2021 copyright in this document is the property of Nu-Wall Aluminium Cladding Limited. All rights reserved. Nu-Wall is a registered trademark of Aluminium Product Brands NZ Limited



General note:
• Cladding fixings omitted for clarity

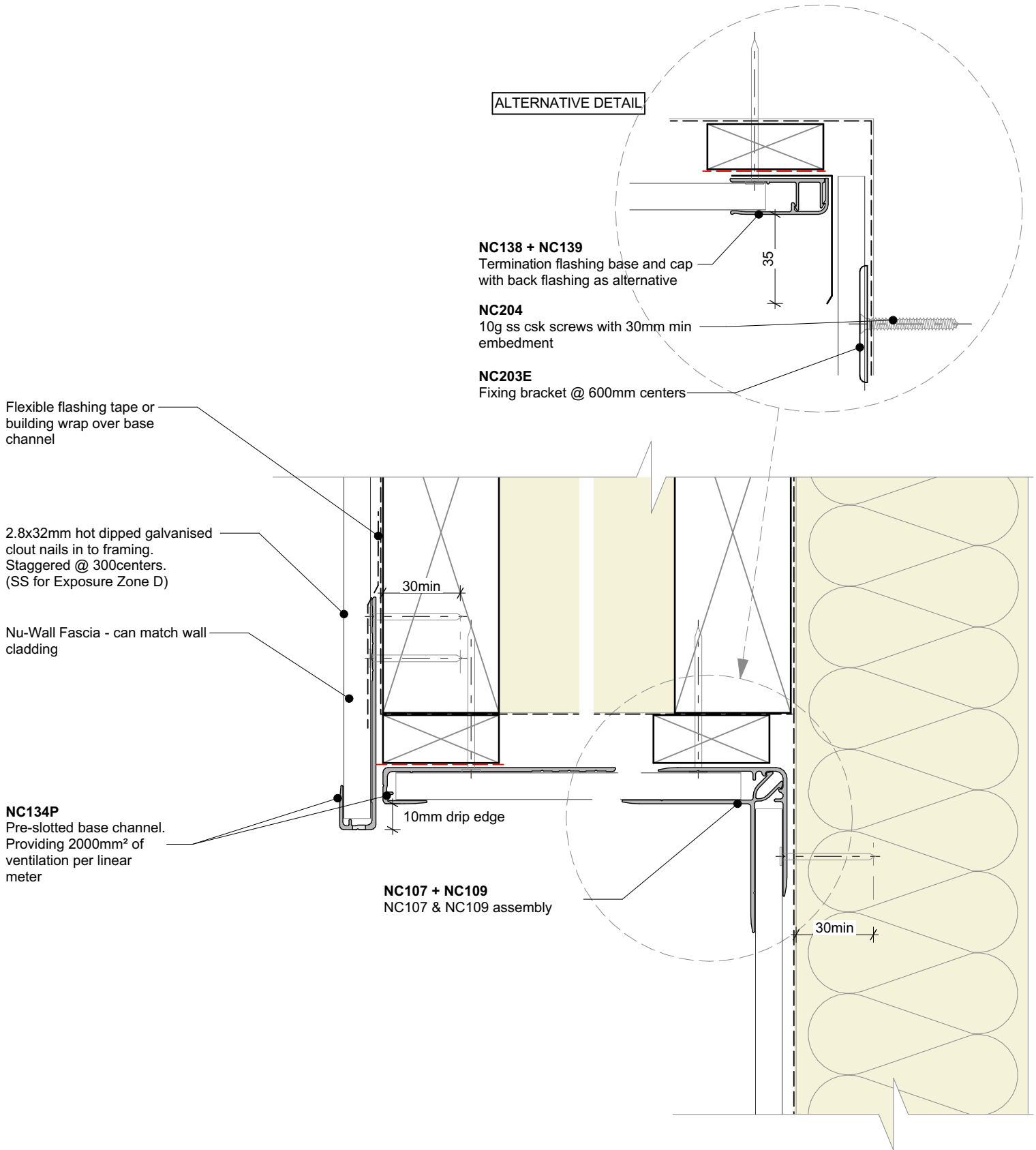


Nu-Wall cladding vertical direct fix
Typical Nu-Wall fascia to soffit

NW-VDF-024.01

Drawn by: Nu-Wall	Date: 9/05/2022
Checked by: RL, GT	Scale: 1:2 @ A4

© 2021 copyright in this document is the property of Nu-Wall Aluminium Cladding Limited. All rights reserved. Nu-Wall is a registered trademark of Aluminium Product Brands NZ Limited



General note:
• Cladding fixings omitted for clarity

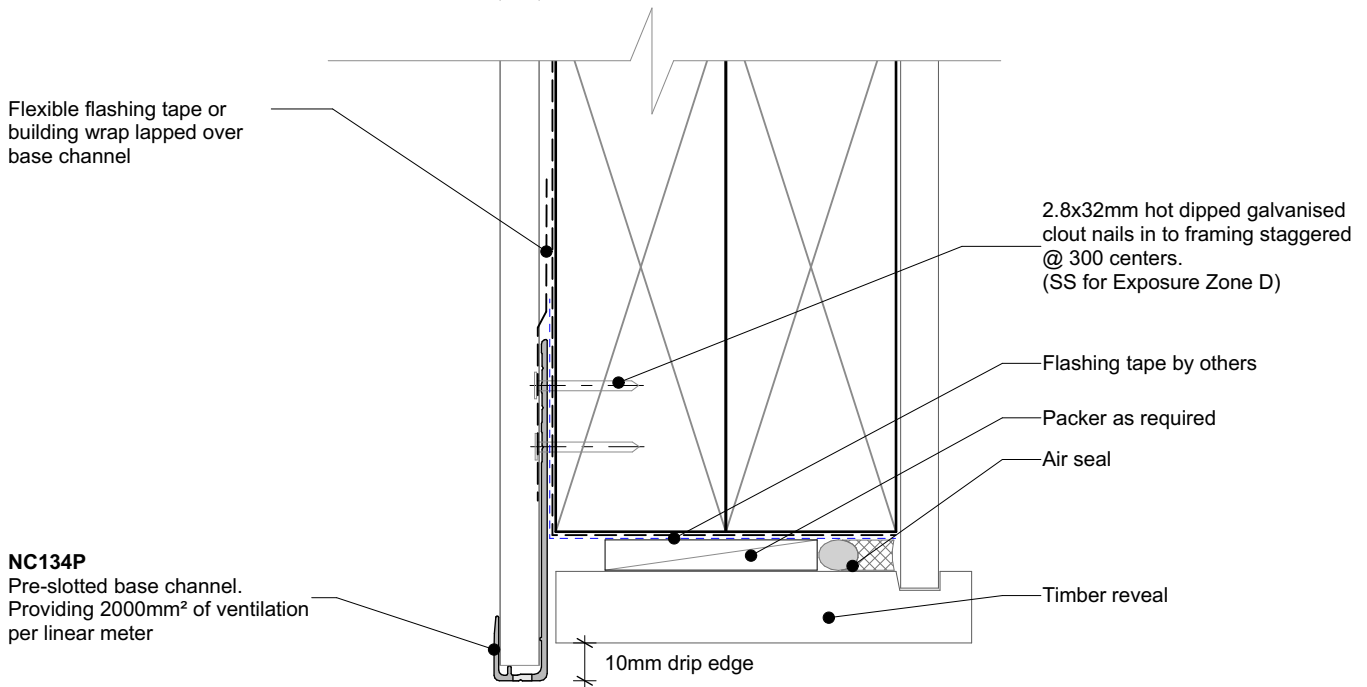


Nu-Wall cladding vertical direct fix
Typical Nu-Wall to fascia - soffit - wall (with alternative)

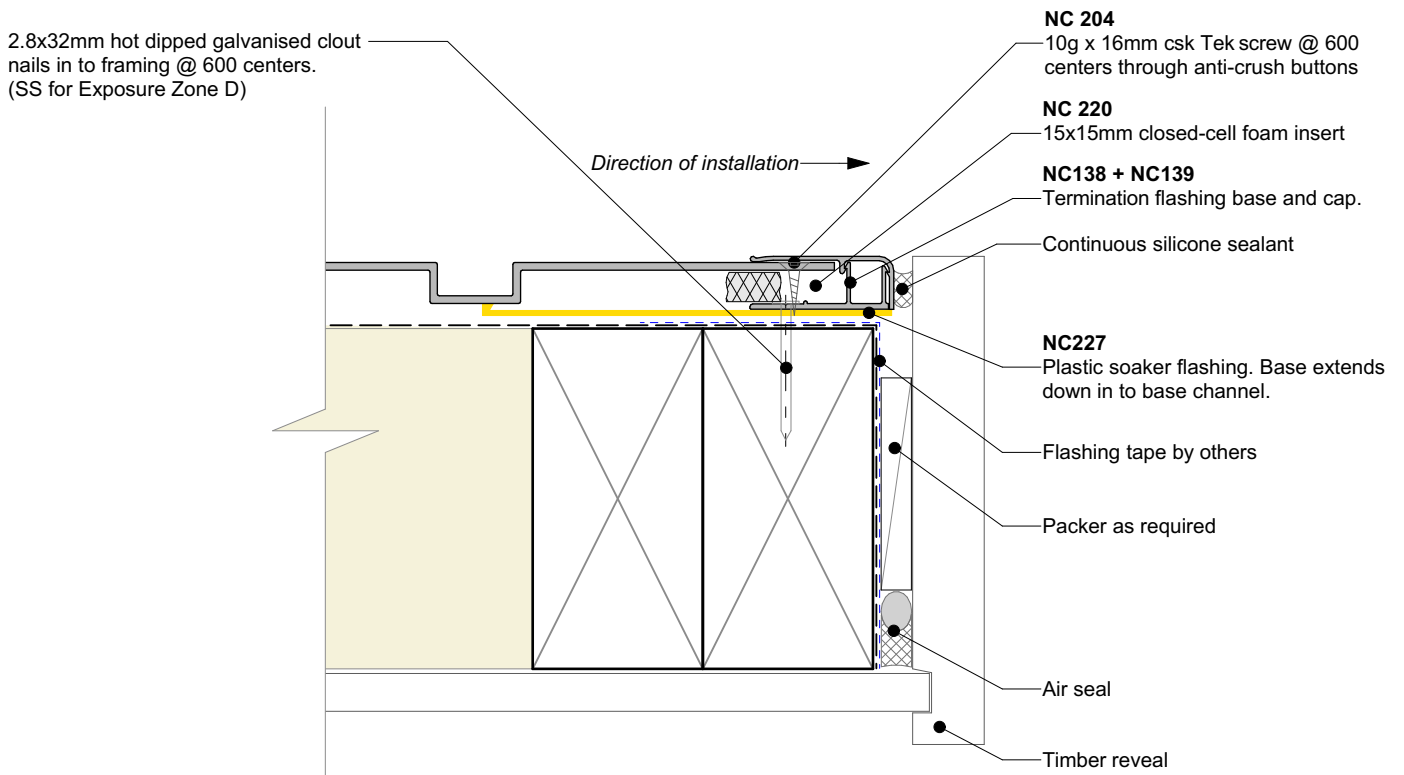
NW-VDF-025.01

Drawn by: Nu-Wall	Date: 9/05/2022
Checked by: RL, GT	Scale: 1:2 @ A4

© 2021 copyright in this document is the property of Nu-Wall Aluminium Cladding Limited. All rights reserved. Nu-Wall is a registered trademark of Aluminium Product Brands NZ Limited



GARAGE DOOR HEAD (Timber reveal)



GARAGE DOOR JAMB (Timber reveal)

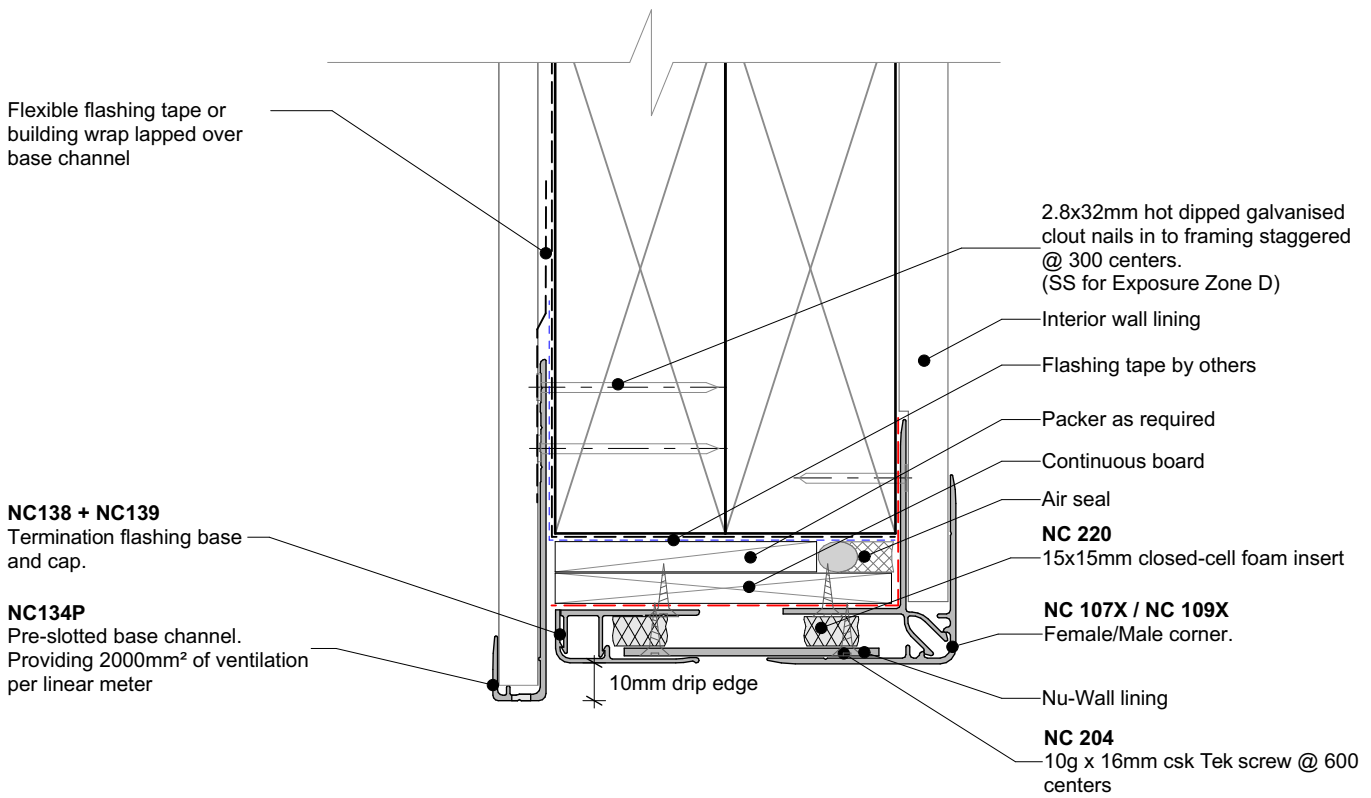


Nu-Wall cladding vertical direct fix
Typical garage door head - jamb (Timber reveal)

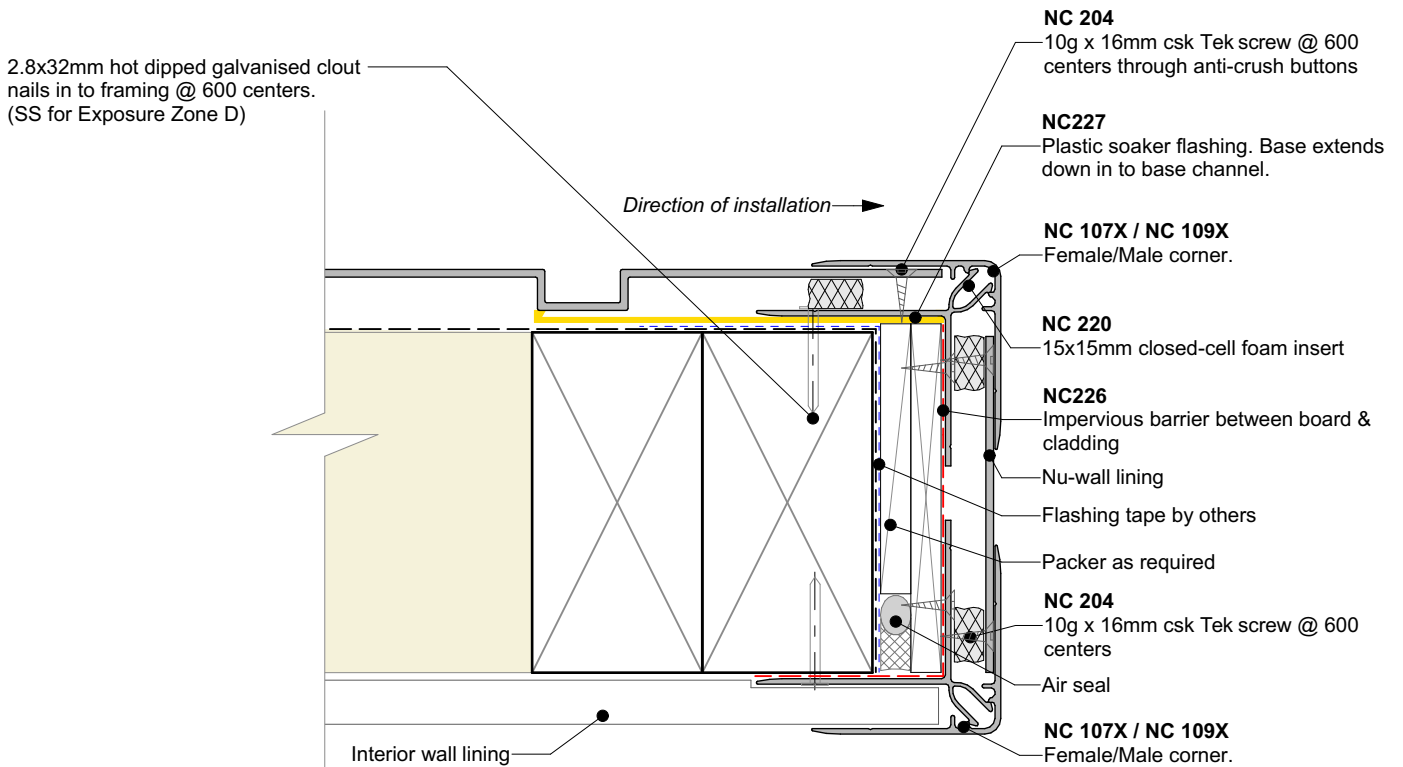
NW-VDF-026.01

Drawn by: Nu-Wall	Date: 9/05/2022
Checked by: RL, GT	Scale: 1:2 @ A4

© 2021 copyright in this document is the property of Nu-Wall Aluminium Cladding Limited. All rights reserved. Nu-Wall is a registered trademark of Aluminium Product Brands NZ Limited



GARAGE DOOR HEAD (Nu-Wall reveal)



GARAGE DOOR JAMB (Nu-Wall reveal)

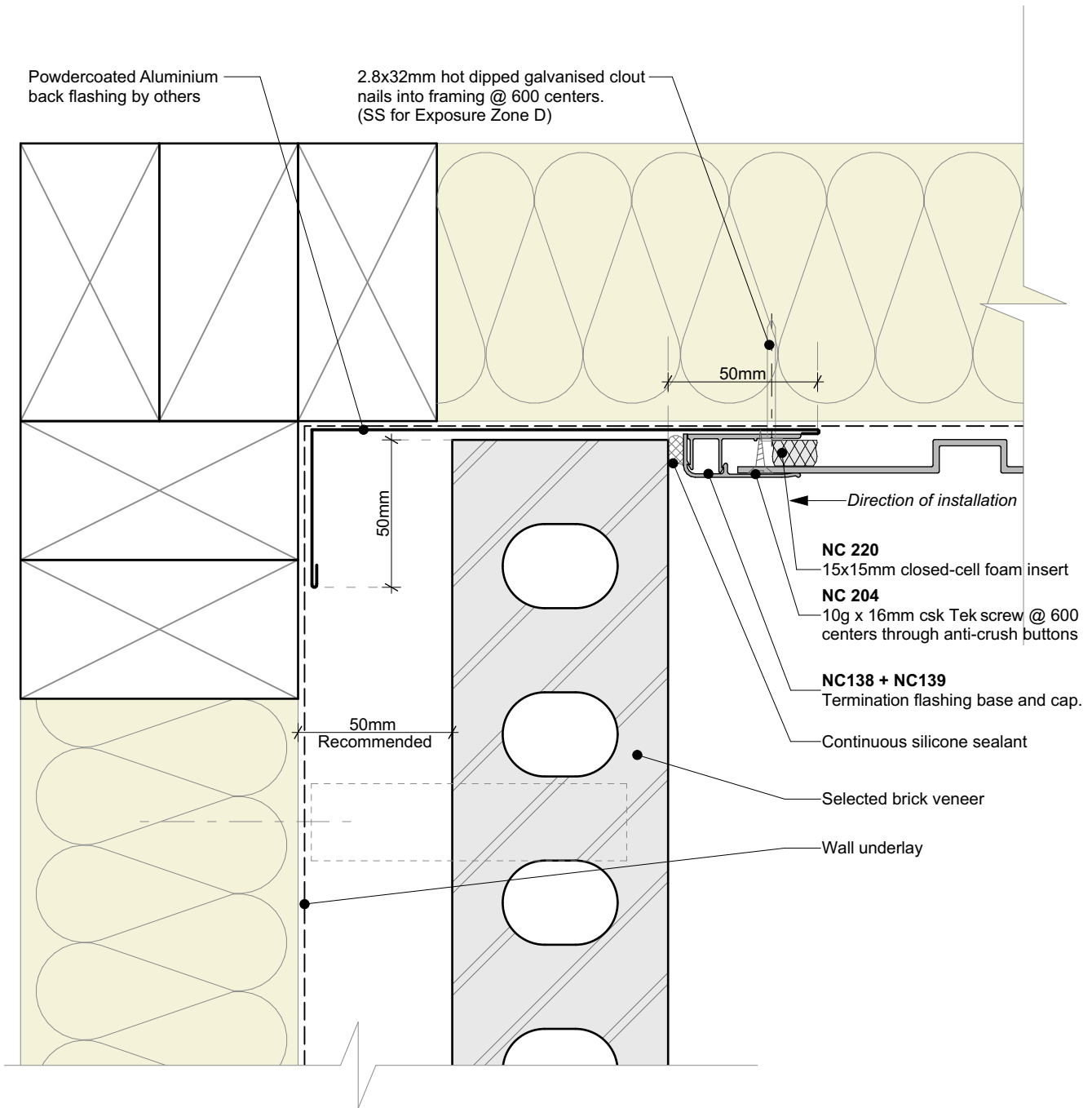


Nu-Wall cladding vertical direct fix
 Typical garage door head - jamb (Nu-Wall Reveal Profile)

NW-VDF-026b.01

Drawn by: Nu-Wall	Date: 9/05/2022
Checked by: RL, GT	Scale: 1:2 @ A4

© 2021 copyright in this document is the property of Nu-Wall Aluminium Cladding Limited. All rights reserved. Nu-Wall is a registered trademark of Aluminium Product Brands NZ Limited



General note:

- Cladding fixings omitted for clarity
- When finishing a wall with a ripped board, the board must be direct fixed with a counter sunk screw @ 600mm centres

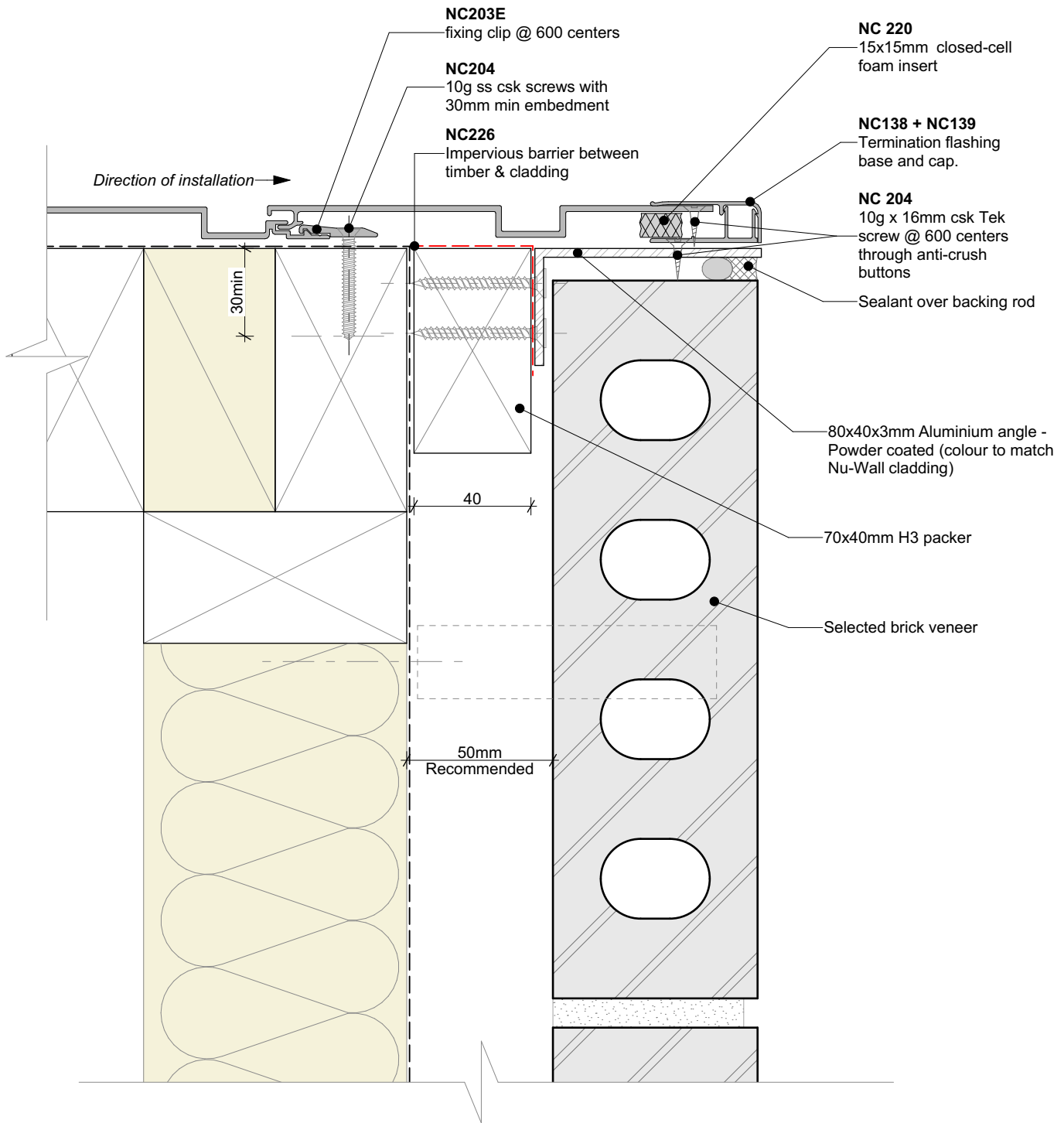


Nu-Wall cladding vertical direct fix
Typical Nu-Wall to brick internal corner

NW-VDF-027.01

Drawn by: Nu-Wall	Date: 9/05/2022
Checked by: RL, GT	Scale: 1:2 @ A4

© 2021 copyright in this document is the property of Nu-Wall Aluminium Cladding Limited. All rights reserved. Nu-Wall is a registered trademark of Aluminium Product Brands NZ Limited



General note:

- Cladding fixings omitted for clarity
- When finishing a wall with a ripped board, the board must be direct fixed with a counter sunk screw @ 600mm centres

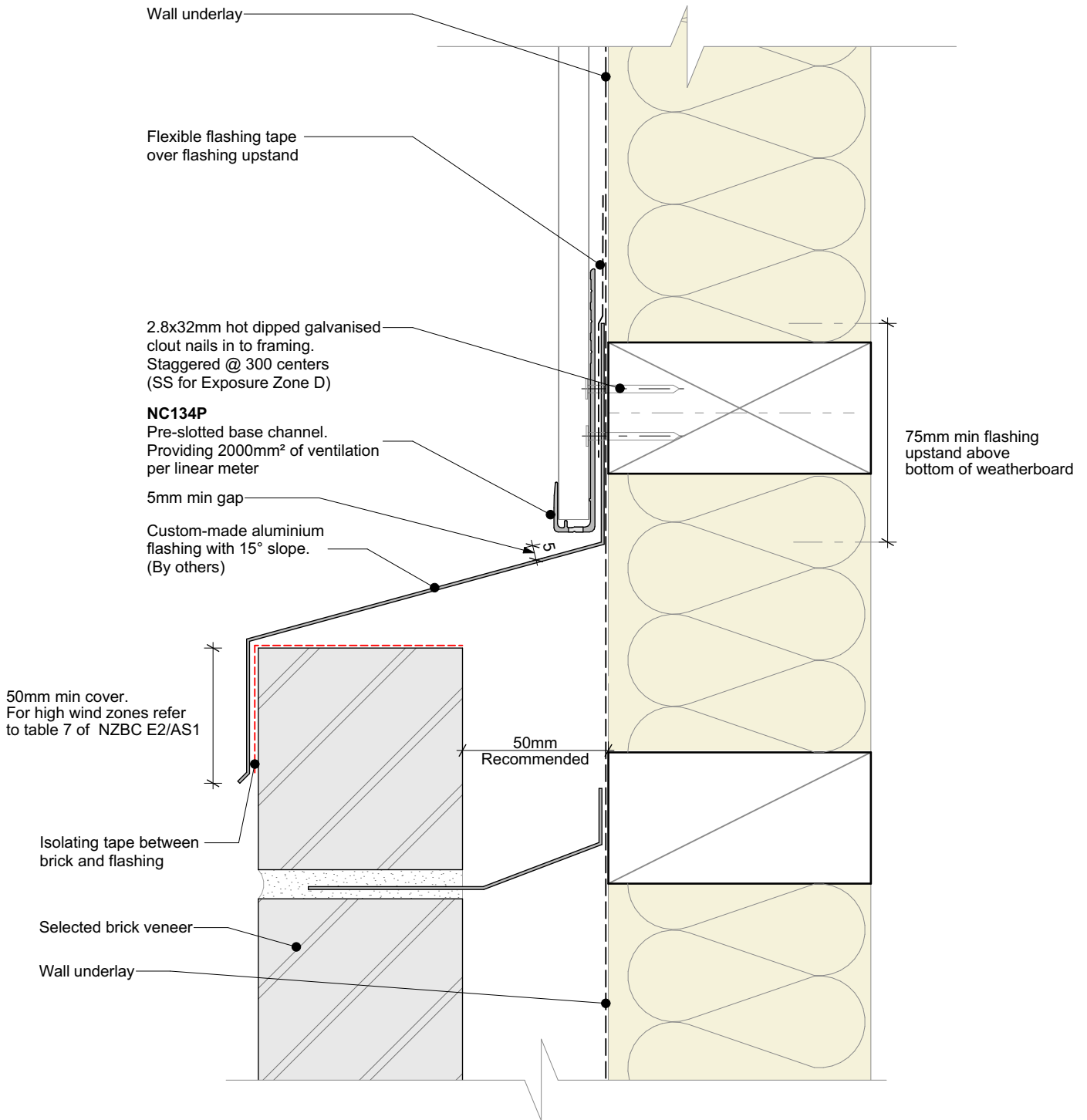


Nu-Wall cladding vertical direct fix
 Typical Nu-Wall to brick external corner NC138 and NC139

NW-VDF-028.01

Drawn by: Nu-Wall	Date: 9/05/2022
Checked by: RL, GT	Scale: 1:2 @ A4

© 2021 copyright in this document is the property of Nu-Wall Aluminium Cladding Limited. All rights reserved. Nu-Wall is a registered trademark of Aluminium Product Brands NZ Limited

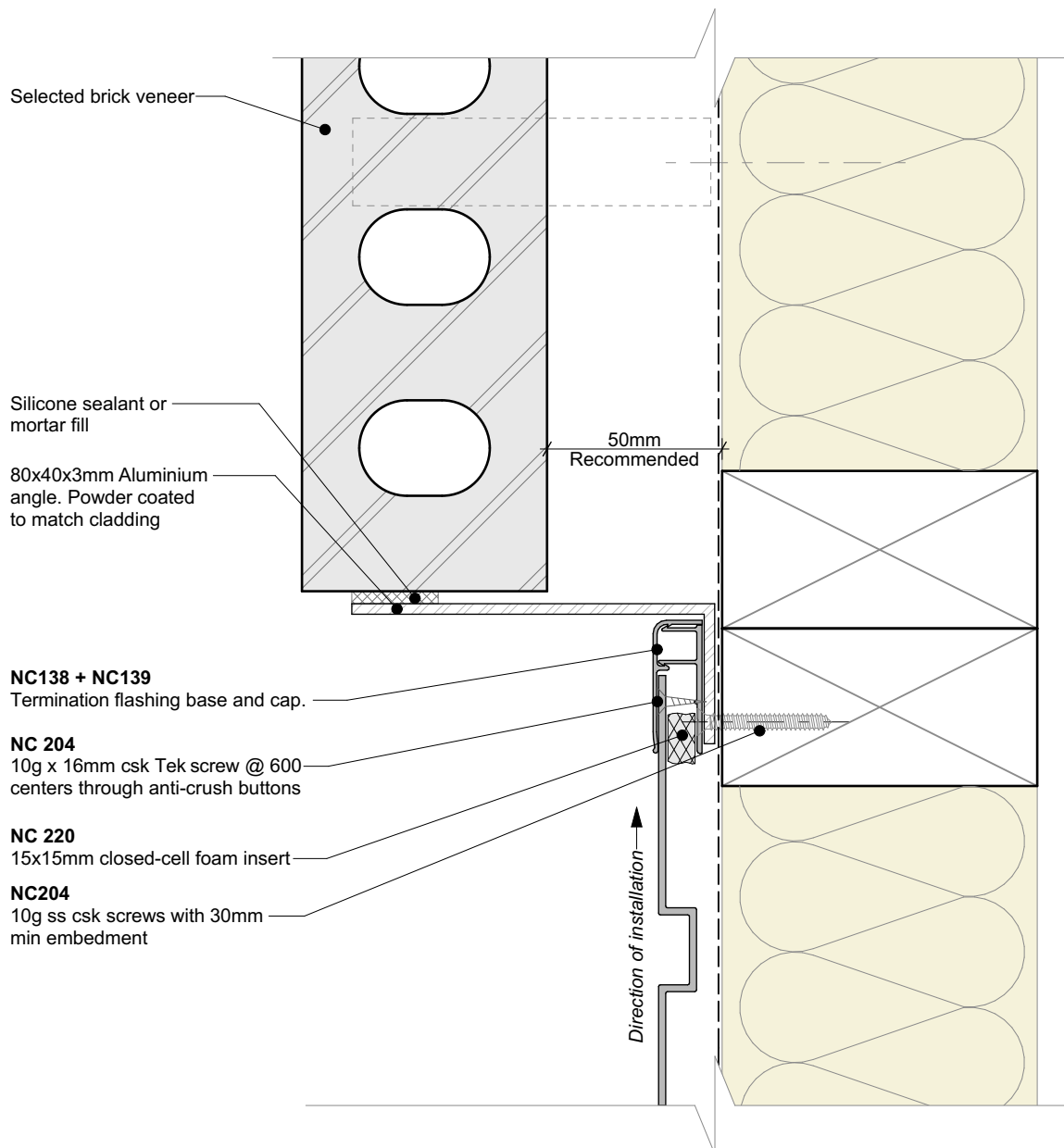


Nu-Wall cladding vertical direct fix
Typical Nu-Wall to brick horizontal junction

NW-VDF-029.01

Drawn by: Nu-Wall	Date: 9/05/2022
Checked by: RL, GT	Scale: 1:2 @ A4

© 2021 copyright in this document is the property of Nu-Wall Aluminium Cladding Limited. All rights reserved. Nu-Wall is a registered trademark of Aluminium Product Brands NZ Limited



General note:

- Cladding fixings omitted for clarity
- When finishing a wall with a ripped board, the board must be direct fixed with a counter sunk screw @ 600mm centres

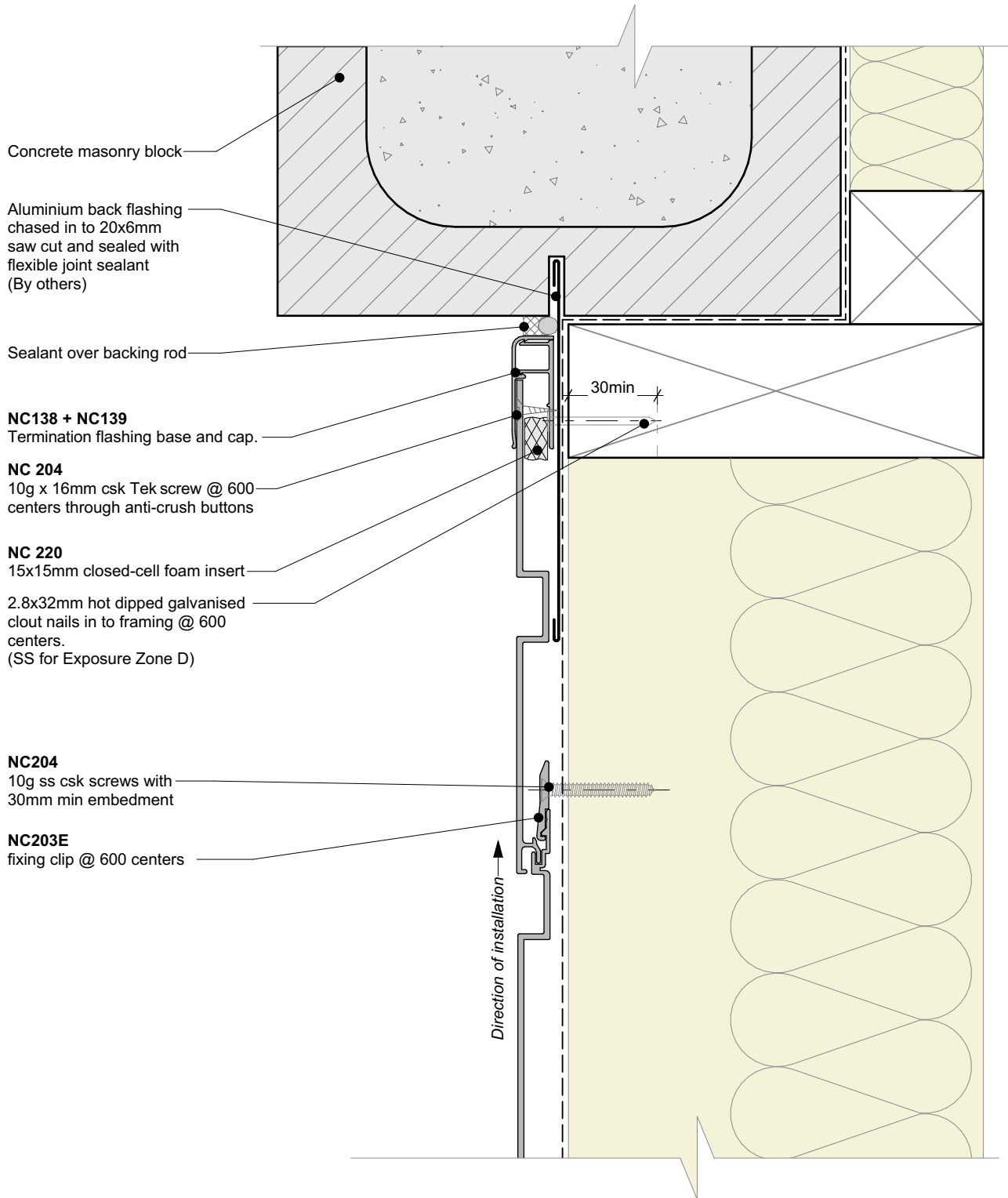


Nu-Wall cladding vertical direct fix
Typical Nu-Wall to brick vertical junction

NW-VDF-030.01

Drawn by: Nu-Wall	Date: 9/05/2022
Checked by: RL, GT	Scale: 1:2 @ A4

© 2021 copyright in this document is the property of Nu-Wall Aluminium Cladding Limited. All rights reserved. Nu-Wall is a registered trademark of Aluminium Product Brands NZ Limited



Concrete masonry block

Aluminium back flashing chased in to 20x6mm saw cut and sealed with flexible joint sealant (By others)

Sealant over backing rod

NC138 + NC139
Termination flashing base and cap.

NC 204
10g x 16mm csk Tek screw @ 600 centers through anti-crush buttons

NC 220
15x15mm closed-cell foam insert
2.8x32mm hot dipped galvanised clout nails in to framing @ 600 centers.
(SS for Exposure Zone D)

NC204
10g ss csk screws with 30mm min embedment

NC203E
fixing clip @ 600 centers

30min

Direction of installation ↑

General note:

- Cladding fixings omitted for clarity
- When finishing a wall with a ripped board, the board must be direct fixed with a counter sunk screw @ 600mm centres



Nu-Wall cladding vertical direct fix
Typical Nu-Wall to concrete masonry vertical junction

NW-VDF-031.01

Drawn by: Nu-Wall	Date: 9/05/2022
Checked by: RL, GT	Scale: 1:2 @ A4

© 2021 copyright in this document is the property of Nu-Wall Aluminium Cladding Limited. All rights reserved. Nu-Wall is a registered trademark of Aluminium Product Brands NZ Limited

Custom folded 1.2mm aluminium flashing powder coated to match cladding and chased in to 15x6mm saw cut and sealed with flexible joint sealant (By others)

NC138 + NC139
Termination flashing base and cap.

NC 204
10g x 16mm csk Tek screw @ 600 centers through anti-crush buttons

NC 220
15x15mm closed-cell foam insert

Concrete masonry block wall

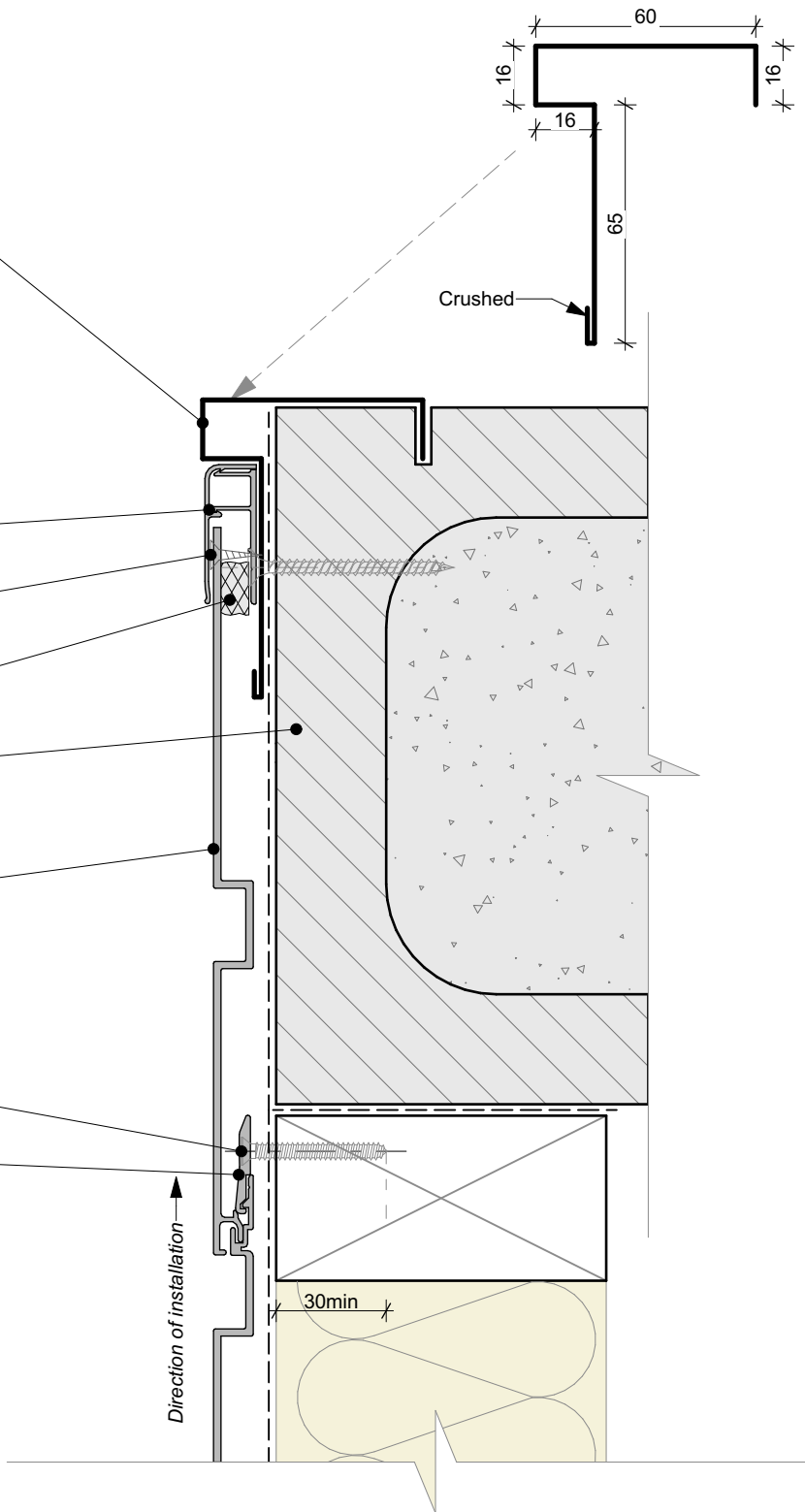
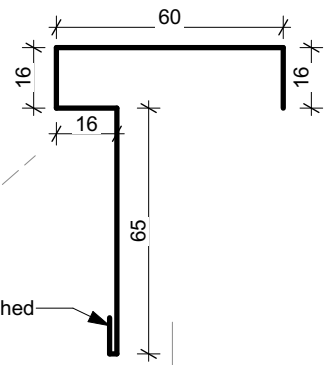
Cut / ripped board

NC204
10g ss csk screws with 30mm min embedment

NC203E
fixing clip @ 600 centers

Direction of installation ↑

Crushed



General note:

- Cladding fixings omitted for clarity
- When finishing a wall with a ripped board, the board must be direct fixed with a counter sunk screw @ 600mm centres

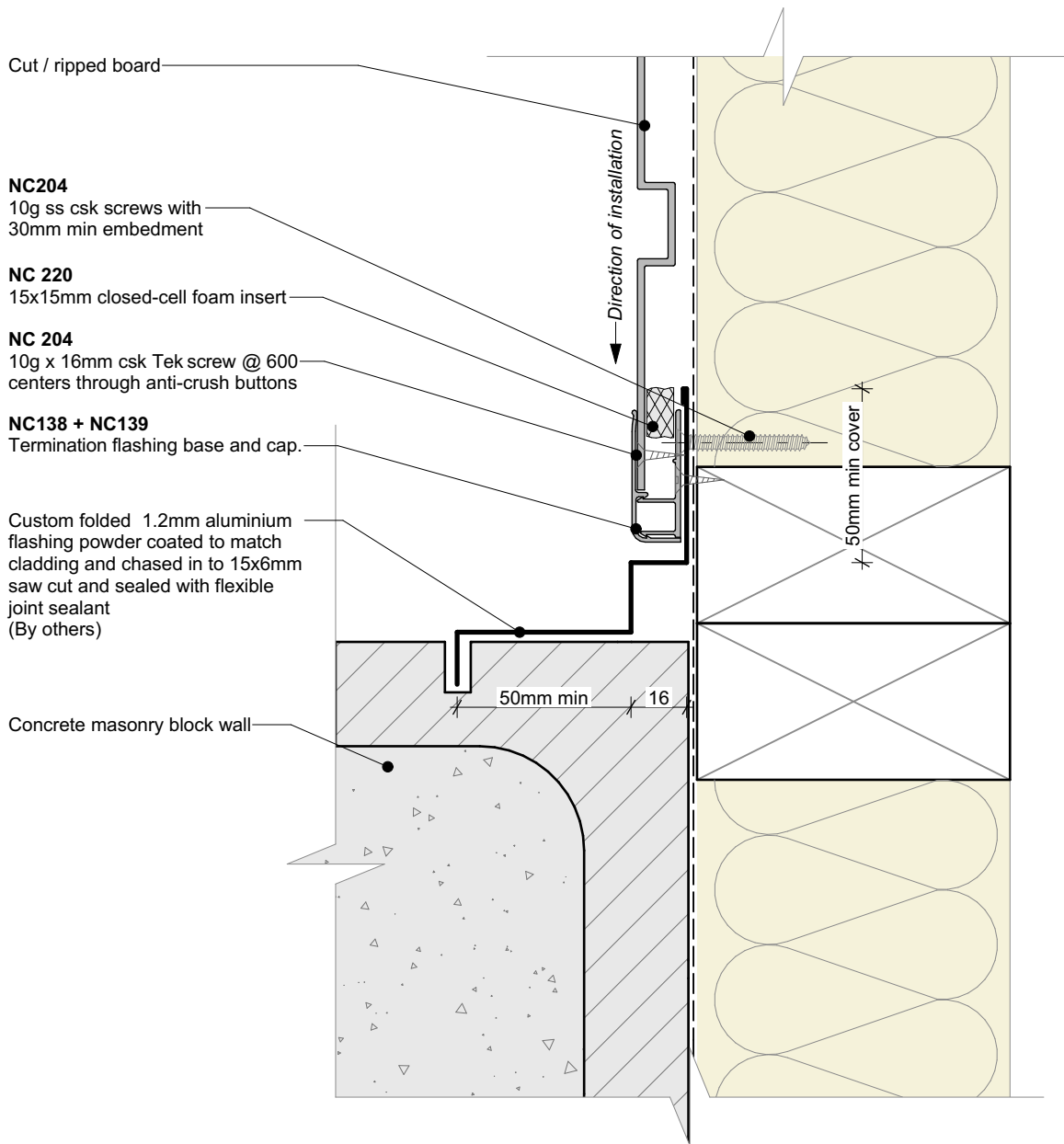


Nu-Wall cladding vertical direct fix
Typical Nu-Wall to concrete masonry external corner

NW-VDF-032.01

Drawn by: Nu-Wall	Date: 9/05/2022
Checked by: RL, GT	Scale: 1:2 @ A4

© 2021 copyright in this document is the property of Nu-Wall Aluminium Cladding Limited. All rights reserved. Nu-Wall is a registered trademark of Aluminium Product Brands NZ Limited



General note:

- Cladding fixings omitted for clarity
- When finishing a wall with a ripped board, the board must be direct fixed with a counter sunk screw @ 600mm centres



Nu-Wall cladding vertical direct fix
Typical Nu-Wall to concrete masonry internal corner

NW-VDF-033.01

Drawn by: Nu-Wall	Date: 9/05/2022
Checked by: RL, GT	Scale: 1:2 @ A4

© 2021 copyright in this document is the property of Nu-Wall Aluminium Cladding Limited. All rights reserved. Nu-Wall is a registered trademark of Aluminium Product Brands NZ Limited